

Caveolin 1 antibody [4D6]

Cat. No. GTX01969

Host	Mouse
Clonality	Monoclonal
Isotype	IgG2a
Applications	WB, IHC-P
Reactivity	Human

Package
500 µl

Applications

Application Note

*Optimal dilutions/concentrations should be determined by the researcher.

Suggested dilution	Recommended dilution
WB	1:4000
IHC-P	1:200

Note : High temperature antigen unmasking technique. Standard ABC technique.

Not tested in other applications.

Calculated MW 20 kDa. ([Note](#))

Properties

Form	Liquid
Buffer	Tissue culture supernatant
Preservative	0.09% Sodium azide
Storage	Store as concentrated solution. Centrifuge briefly prior to opening vial. Store at 4°C.
Immunogen	Prokaryotic recombinant protein corresponding to the N-terminus domain of the human caveolin-1 molecule.
Purification	Unpurified
Conjugation	Unconjugated

Note

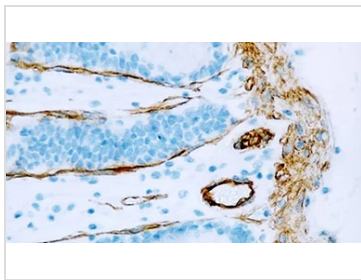
For laboratory research use only. Not for any clinical, therapeutic, or diagnostic use in humans or animals. Not for animal or human consumption.

Purchasers shall not, and agree not to enable third parties to, analyze, copy, reverse engineer or otherwise attempt to determine the structure or sequence of the product.



For full product information, images and publications, please visit our [website](#).

DATA IMAGES



GTx01969 IHC-P Image

IHC-P analysis of normal human colon tissue using GTx01969 Caveolin 1 antibody [4D6]. Note cytoplasmic staining of smooth muscle and endothelium.



For full product information, images and publications, please visit our [website](#).