

# Calpain 3 antibody [Calp3c/12A2]

**Cat. No. GTX01970**

<b>Host</b>	Mouse
<b>Clonality</b>	Monoclonal
<b>Isotype</b>	IgG2a
<b>Application</b>	WB
<b>Reactivity</b>	Human, Mouse, Rat, Rabbit, Dog, Hamster, Chicken, Pig

**Package**  
500 µl

## APPLICATION

### Application Note

\*Optimal dilutions/concentrations should be determined by the researcher.

Suggested dilution	Recommended dilution
WB	1:100

Not tested in other applications.

**Calculated MW** 94 kDa. ( [Note](#) )

**Product Note** This antibody reacts with full-size calpain 3 (94 kD) plus an additional breakdown product at 60 kD.

## PROPERTIES

<b>Form</b>	Liquid
<b>Buffer</b>	Tissue culture supernatant
<b>Preservative</b>	0.09% Sodium azide
<b>Storage</b>	Store as concentrated solution. Centrifuge briefly prior to opening vial. For short-term storage (1-2 weeks), store at 4°C. For long-term storage, aliquot and store at -20°C or below. Avoid multiple freeze-thaw cycles.
<b>Immunogen</b>	Synthetic peptide containing amino acids 355-370 of the human calpain 3 sequence.
<b>Purification</b>	Unpurified
<b>Conjugation</b>	Unconjugated

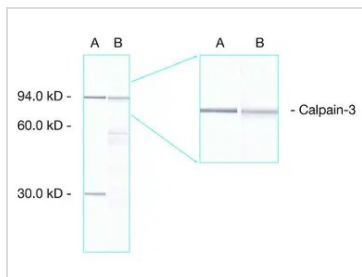
**Note** For laboratory research use only. Not for any clinical, therapeutic, or diagnostic use in humans or animals. Not for animal or human consumption.

Purchasers shall not, and agree not to enable third parties to, analyze, copy, reverse engineer or otherwise attempt to determine the structure or sequence of the product.



For full product information, images and publications, please visit our [website](#).

## DATA IMAGES



### GTX01970 WB Image

WB analysis of human skeletal muscle tissue lysate using GTX01970 Calpain 3 antibody [Calp3c/12A2] and GTX01970 Calpain 3 antibody [Calp3d/2C4].

Lane A : GTX01971

Lane B : GTX01970



For full product information, images and publications, please visit our [website](https://www.genetex.com).