

Emerin antibody [4G5]

Cat. No. GTX01975

Host	Mouse
Clonality	Monoclonal
Isotype	IgG1
Applications	ICC/IF, IHC-P, IHC-Fr
Reactivity	Human, Mouse

References (1)

Package

500 µl

Applications

Application Note

*Optimal dilutions/concentrations should be determined by the researcher.

Suggested dilution	Recommended dilution
ICC/IF	Assay dependent
IHC-P	1:160
IHC-Fr	1:20–1:40

Note : The recommended fixative is 10% neutral-buffered formalin for paraffin-embedded tissue sections. Heat Induced Epitope Retrieval (HIER) was performed in Epitope Retrieval Solution pH 6.

This antibody requires the sections to be fixed in acetone for 10 minutes at 25°C prior to incubation with the primary antibody.

Not tested in other applications.

Properties

Form	Liquid
Buffer	Tissue culture supernatant
Preservative	0.09% Sodium azide
Storage	Store as concentrated solution. Centrifuge briefly prior to opening vial. For short-term storage (1-2 weeks), store at 4°C. For long-term storage, aliquot and store at -20°C or below. Avoid multiple freeze-thaw cycles.
Immunogen	Prokaryotic recombinant protein corresponding to a 222 amino acid region near the N-terminus of the emerin protein.
Purification	Unpurified
Conjugation	Unconjugated

Note

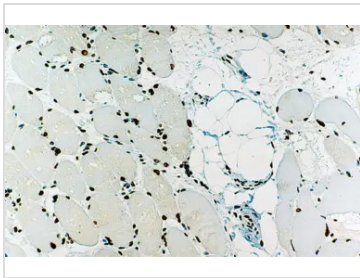
For laboratory research use only. Not for any clinical, therapeutic, or diagnostic use in humans or animals. Not for animal or human consumption.

Purchasers shall not, and agree not to enable third parties to, analyze, copy, reverse engineer or otherwise attempt to determine the structure or sequence of the product.



For full product information, images and publications, please visit our [website](#).

DATA IMAGES

**GTX01975 IHC-P Image**

IHC-P analysis of human skeletal muscle tissue using GTX01975 Emerin antibody [4G5]. Note perinuclear staining of all cell nuclei.



For full product information, images and publications, please visit our [website](#).