

Utrophin antibody [DRP3/20C5]

Cat. No. GTX01977

Host	Mouse
Clonality	Monoclonal
Isotype	IgG1
Applications	IHC-Fr
Reactivity	Human, Rat, Dog

Package
500 µl

Applications

Application Note

*Optimal dilutions/concentrations should be determined by the researcher.

Suggested dilution	Recommended dilution
IHC-Fr	1:2-1:10

Note : Freeze specimen tissue blocks in isopentane chilled in liquid nitrogen.

Not tested in other applications.

Product Note This antibody recognizes amino terminal domain of the human homolog of human dystrophin, utrophin.

Properties

Form	Liquid
Buffer	Tissue culture supernatant
Preservative	0.09% Sodium azide
Storage	Store as concentrated solution. Centrifuge briefly prior to opening vial. For short-term storage (1-2 weeks), store at 4°C. For long-term storage, aliquot and store at -20°C or below. Avoid multiple freeze-thaw cycles.
Immunogen	Fusion protein containing the first 261 amino acids of the published DMDL gene sequence.
Purification	Unpurified
Conjugation	Unconjugated

Note

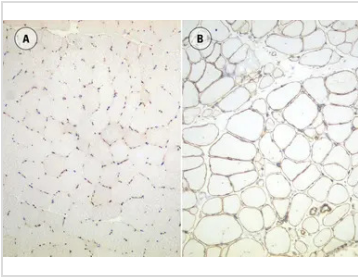
For laboratory research use only. Not for any clinical, therapeutic, or diagnostic use in humans or animals. Not for animal or human consumption.

Purchasers shall not, and agree not to enable third parties to, analyze, copy, reverse engineer or otherwise attempt to determine the structure or sequence of the product.



For full product information, images and publications, please visit our [website](#).

DATA IMAGES

**GTX01977 IHC-Fr Image**

IHC-Fr analysis of human skeletal muscle tissue using GTX01977 Utrophin antibody [DRP3/20C5].



For full product information, images and publications, please visit our [website](#).