

## KSHV ORF73 antibody [13B10]

Cat. No. GTX01981

Host	Mouse
Clonality	Monoclonal
Isotype	IgG1
Applications	IHC-P
Reactivity	Kaposi's sarcoma-associated herpesvirus

References ( 5 )

Package

500 µl

## Applications

## Application Note

\*Optimal dilutions/concentrations should be determined by the researcher.

Suggested dilution	Recommended dilution
IHC-P	1:50

**Note : The recommended fixative is 10% neutral-buffered formalin for paraffin-embedded tissue sections. Heat Induced Epitope Retrieval (HIER) was performed in Epitope Retrieval Solution pH6.**

Not tested in other applications.

## Properties

Form	Liquid
Buffer	Tissue culture supernatant
Preservative	0.09% Sodium azide
Storage	Store as concentrated solution. Centrifuge briefly prior to opening vial. Store at 4°C. DO NOT FREEZE.
Immunogen	Prokaryotic recombinant protein corresponding to a portion of the C-terminus of the latent nuclear antigen-1 molecule of HHV8.
Purification	Unpurified
Conjugation	Unconjugated

## Note

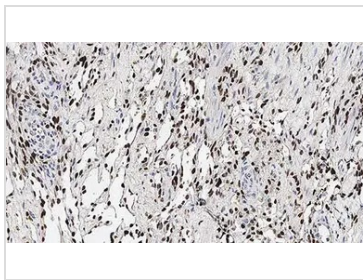
For laboratory research use only. Not for any clinical, therapeutic, or diagnostic use in humans or animals. Not for animal or human consumption.

Purchasers shall not, and agree not to enable third parties to, analyze, copy, reverse engineer or otherwise attempt to determine the structure or sequence of the product.



For full product information, images and publications, please visit our [website](#).

## DATA IMAGES



### GTX01981 IHC-P Image

IHC-P analysis of human skin, Kaposi's sarcoma tissue using GTX01981 KSHV ORF73 antibody [13B10].  
Note nuclear staining of neoplastic spindle cells.



For full product information, images and publications, please visit our [website](#).