

## Galactosidase alpha antibody [001]

Cat. No. GTX01987

Host	Rabbit
Clonality	Monoclonal
Isotype	IgG
Application	WB, IP
Reactivity	Human

Package  
100 µl

## APPLICATION

## Application Note

\*Optimal dilutions/concentrations should be determined by the researcher.

Suggested dilution	Recommended dilution
WB	1:1000-1:5000
IP	4-6 µl/mg of lysate

Not tested in other applications.

Calculated MW 49 kDa. ( [Note](#) )

## PROPERTIES

Form	Liquid
Buffer	Filter-sterilized PBS
Preservative	No preservative
Storage	Store as concentrated solution. Centrifuge briefly prior to opening vial. For short-term storage (1-2 weeks), store at 4°C. For long-term storage, aliquot and store at -20°C or below. Avoid multiple freeze-thaw cycles.
Concentration	Batch dependent (Please refer to the vial label for the specific concentration.)
Immunogen	Recombinant Human alpha-Galactosidase A / GLA protein
Purification	Purified by Protein A
Conjugation	Unconjugated

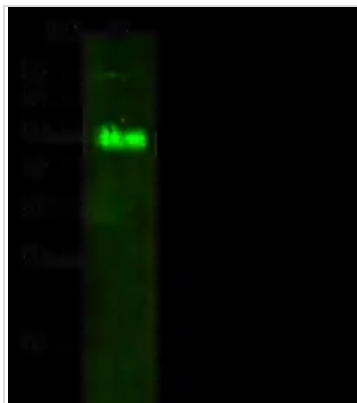
## Note

For laboratory research use only. Not for any clinical, therapeutic, or diagnostic use in humans or animals. Not for animal or human consumption.

Purchasers shall not, and agree not to enable third parties to, analyze, copy, reverse engineer or otherwise attempt to determine the structure or sequence of the product.



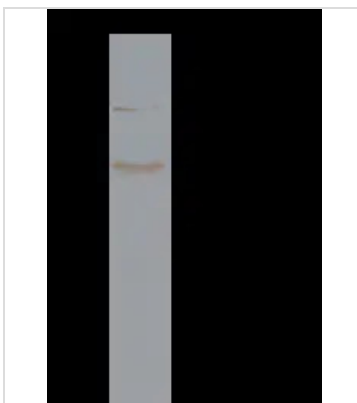
For full product information, images and publications, please visit our [website](#).

**DATA IMAGES**

**GTX01987 WB Image**

WB analysis of 293T whole cell lysate (Lane A) using GTX01987 Galactosidase alpha antibody [001].

Dilution : 1:1000

Loading : 30 µg


**GTX01987 IP Image**

IP analysis of MCF-7 whole cell lysate using GTX01987 Galactosidase alpha antibody [001].

IP antibody : 2 µl per 0.5 mg total whole cell lysate

Dilution : 1:1000

50 % Protein G agarose : 15 µl



For full product information, images and publications, please visit our [website](#).