

TACSTD2 antibody [001]

Cat. No. GTX01991

Host	Rabbit
Clonality	Monoclonal
Isotype	IgG
Applications	ICC/IF, FCM
Reactivity	Human

Package
100 µl

Applications

Application Note

*Optimal dilutions/concentrations should be determined by the researcher.

Suggested dilution	Recommended dilution
ICC/IF	1:50-1:1000
FCM	1:25-1:100

Not tested in other applications.

Calculated MW 36 kDa. ([Note](#))

Product Note No cross-reactivity with human VCAM1 protein in ELISA assay.

Properties

Form	Liquid
Buffer	Filter-sterilized PBS
Preservative	No preservative
Storage	Store as concentrated solution. Centrifuge briefly prior to opening vial. For short-term storage (1-2 weeks), store at 4°C. For long-term storage, aliquot and store at -20°C or below. Avoid multiple freeze-thaw cycles.
Concentration	Batch dependent (Please refer to the vial label for the specific concentration.)
Immunogen	Recombinant Human TROP2 / TACSTD2 protein
Purification	Purified by Protein A
Conjugation	Unconjugated

Note

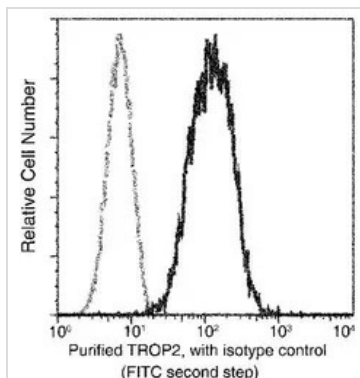
For laboratory research use only. Not for any clinical, therapeutic, or diagnostic use in humans or animals. Not for animal or human consumption.

Purchasers shall not, and agree not to enable third parties to, analyze, copy, reverse engineer or otherwise attempt to determine the structure or sequence of the product.



For full product information, images and publications, please visit our [website](#).

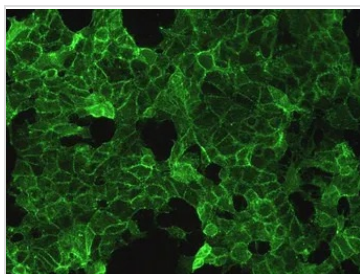
DATA IMAGES



GTx01991 FCM Image

FACS analysis of MCF-7 cells using GTx01991 TACSTD2 antibody [001].

The histogram were derived from gated events with the forward and side light-scatter characteristics of intact cells.



GTx01991 ICC/IF Image

ICC/IF analysis of PFA-fixed MCF-7 cells using GTx01991 TACSTD2 antibody [001].

Green : Primary antibody

Dilution : 1:200



For full product information, images and publications, please visit our [website](#).