

## Diablo antibody [006]

Cat. No. GTX02004

Host	Rabbit
Clonality	Monoclonal
Isotype	IgG
Applications	WB, ICC/IF, FCM
Reactivity	Human

Package  
100 µl

## Applications

## Application Note

\*Optimal dilutions/concentrations should be determined by the researcher.

Suggested dilution	Recommended dilution
WB	1:10000-1:50000
ICC/IF	1:20-1:100
FCM	1:25-1:100

Not tested in other applications.

Calculated MW 27 kDa. ( [Note](#) )

## Properties

Form	Liquid
Buffer	Filter-sterilized PBS
Preservative	No preservative
Storage	Store as concentrated solution. Centrifuge briefly prior to opening vial. For short-term storage (1-2 weeks), store at 4°C. For long-term storage, aliquot and store at -20°C or below. Avoid multiple freeze-thaw cycles.
Concentration	Batch dependent (Please refer to the vial label for the specific concentration.)
Immunogen	Recombinant Human SMAC / Diablo protein
Purification	Purified by Protein A
Conjugation	Unconjugated

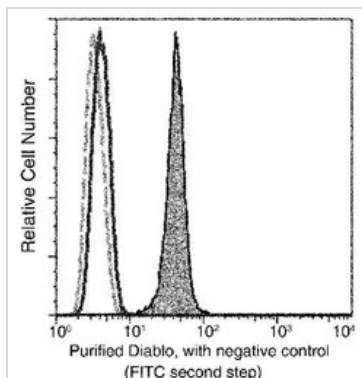
## Note

For laboratory research use only. Not for any clinical, therapeutic, or diagnostic use in humans or animals. Not for animal or human consumption.

Purchasers shall not, and agree not to enable third parties to, analyze, copy, reverse engineer or otherwise attempt to determine the structure or sequence of the product.



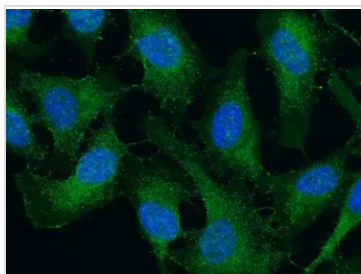
For full product information, images and publications, please visit our [website](#).

**DATA IMAGES**

**GTx02004 FCM Image**

FACS analysis of HeLa cells using GTx02004 Diablo antibody [006].

Black solid line histogram : Primary antibody was blocked by preincubation of the purified antibody with 20µg recombinant human Diablo protein for 1 hour.

The fluorescence histograms were derived from gated events with the forward and side light-scatter characteristics of intact cells.


**GTx02004 ICC/IF Image**

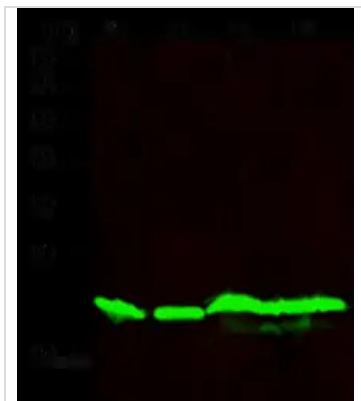
ICC/IF analysis of PFA-fixed HeLa cells using GTx02004 Diablo antibody [006].

Green : Primary antibody

Blue : DAPI

Dilution : 1:60

Permeabilization : 0.3% Triton X-100


**GTx02004 WB Image**

WB analysis of various samples using GTx02004 Diablo antibody [006].

Lane A : HeLa whole cell lysate

Lane B : Jurkat whole cell lysate

Lane C : A431 whole cell lysate

Lane D : MCF-7 whole cell lysate

Dilution : 1:10000

Loading : 30 µg



For full product information, images and publications, please visit our [website](https://www.genetex.com).