

Angiotensinogen antibody [034]

Cat. No. GTX02046

Host	Rabbit
Clonality	Monoclonal
Isotype	IgG
Applications	IHC-P
Reactivity	Human

Package
100 µl

Applications

Application Note

*Optimal dilutions/concentrations should be determined by the researcher.

Suggested dilution	Recommended dilution
IHC-P	1:100-1:500

Not tested in other applications.

Product Note

It has cross-reactivity with human SERPINA1 protein, human SERPINA3 protein, human SERPINA5 protein, human SERPINC1 protein, human SERPIND1 protein, human SERPINF2 protein, human SERPING1 protein, and human SERPINI1 protein in ELISA assay.

Properties

Form	Liquid
Buffer	Filter-sterilized PBS
Preservative	No preservatives
Storage	Store as concentrated solution. Centrifuge briefly prior to opening vial. For short-term storage (1-2 weeks), store at 4°C. For long-term storage, aliquot and store at -20°C or below. Avoid multiple freeze-thaw cycles.
Concentration	Batch dependent (Please refer to the vial label for the specific concentration.)
Immunogen	Recombinant Human Angiotensinogen protein, His tag (GTX01232-pro)
Purification	Purified by Protein A
Conjugation	Unconjugated

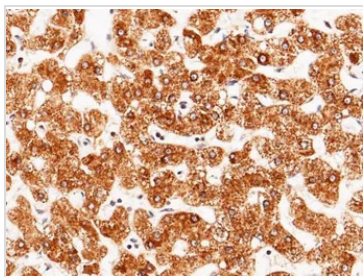
Note

For laboratory research use only. Not for any clinical, therapeutic, or diagnostic use in humans or animals. Not for animal or human consumption.

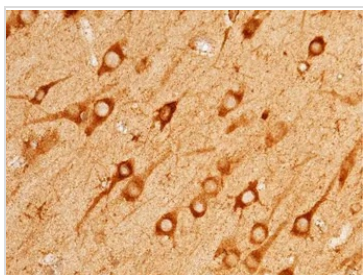
Purchasers shall not, and agree not to enable third parties to, analyze, copy, reverse engineer or otherwise attempt to determine the structure or sequence of the product.



For full product information, images and publications, please visit our [website](#).

DATA IMAGES

GTx02046 IHC-P Image

IHC-P analysis of human cirrhosis tissue section using GTx02046 Angiotensinogen antibody [034].
Dilution : 1:200


GTx02046 IHC-P Image

IHC-P analysis of human brain tissue section using GTx02046 Angiotensinogen antibody [034].
Dilution : 1:200



For full product information, images and publications, please visit our [website](#).