

# STUB1 antibody [034]

**Cat. No. GTX02047**

<b>Host</b>	Rabbit
<b>Clonality</b>	Monoclonal
<b>Isotype</b>	IgG
<b>Application</b>	WB, ICC/IF, FACS, IP
<b>Reactivity</b>	Human

**Package**  
100 µl

## APPLICATION

### Application Note

\*Optimal dilutions/concentrations should be determined by the researcher.

Suggested dilution	Recommended dilution
WB	1:500-1:2000
ICC/IF	1:100-1:500
FACS	1:100-1:500
IP	1-4 µl/mg of lysate

Not tested in other applications.

**Calculated MW** 35 kDa. ( [Note](#) )

## PROPERTIES

<b>Form</b>	Liquid
<b>Buffer</b>	Filter-sterilized PBS
<b>Preservative</b>	No preservative
<b>Storage</b>	Store as concentrated solution. Centrifuge briefly prior to opening vial. For short-term storage (1-2 weeks), store at 4°C. For long-term storage, aliquot and store at -20°C or below. Avoid multiple freeze-thaw cycles.
<b>Concentration</b>	Batch dependent (Please refer to the vial label for the specific concentration.)
<b>Immunogen</b>	Recombinant Human STUB1 protein
<b>Purification</b>	Purified by Protein A
<b>Conjugation</b>	Unconjugated

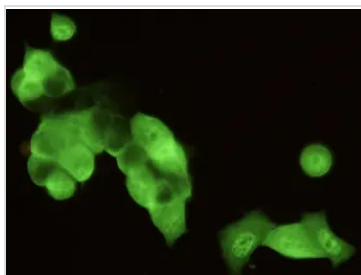
### Note

For laboratory research use only. Not for any clinical, therapeutic, or diagnostic use in humans or animals. Not for animal or human consumption.

Purchasers shall not, and agree not to enable third parties to, analyze, copy, reverse engineer or otherwise attempt to determine the structure or sequence of the product.



For full product information, images and publications, please visit our [website](#).

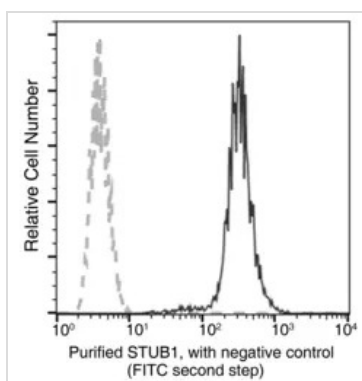
**DATA IMAGES**

**GTX02047 ICC/IF Image**

ICC/IF analysis of PFA-fixed MCF-7 cells using GTX02047 STUB1 antibody [034].

Green : Primary antibody

Dilution : 1:300

Permeabilization : 0.1% Triton X-100


**GTX02047 FACS Image**

FACS analysis of HeLa cells using GTX02047 STUB1 antibody [034].

The fluorescence histograms were derived from gated events with the forward and side light-scatter characteristics of intact cells.


**GTX02047 IP Image**

IP analysis of HeLa whole cell lysate using GTX02047 STUB1 antibody [034].

IP antibody : 2 µl per 0.5 mg total whole cell lysate

Dilution : 1:500

50 % Protein G agarose : 15 µl


**GTX02047 WB Image**

WB analysis of various samples using GTX02047 STUB1 antibody [034].

Lane A : HeLa whole cell lysate

Lane B : 293T whole cell lysate

Lane C : MCF-7 whole cell lysate

Dilution : 1:500

Loading : 30 µg



For full product information, images and publications, please visit our [website](https://www.genetex.com).