

LAMP1 antibody [07]

Cat. No. GTX02073

Host	Mouse
Clonality	Monoclonal
Isotype	IgG1
Application	WB, ICC/IF, IHC-P, FACS, IP
Reactivity	Human

Package
100 µl

APPLICATION

Application Note

*Optimal dilutions/concentrations should be determined by the researcher.

Suggested dilution	Recommended dilution
WB	1:500-1:2000
ICC/IF	1:20-1:100
IHC-P	1:50-1:200
FACS	1:25-1:100
IP	1-4 µl/mg of lysate

Not tested in other applications.

Calculated MW 45 kDa. ([Note](#))

PROPERTIES

Form	Liquid
Buffer	Filter-sterilized PBS
Preservative	No preservative
Storage	Store as concentrated solution. Centrifuge briefly prior to opening vial. For short-term storage (1-2 weeks), store at 4°C. For long-term storage, aliquot and store at -20°C or below. Avoid multiple freeze-thaw cycles.
Concentration	Batch dependent (Please refer to the vial label for the specific concentration.)
Immunogen	Recombinant Human LAMP1 protein
Purification	Purified by Protein A
Conjugation	Unconjugated

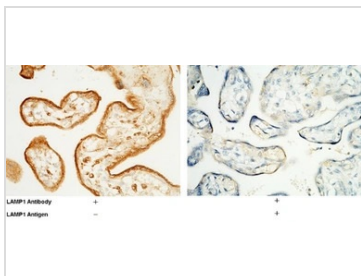


For full product information, images and publications, please visit our [website](#).

For laboratory research use only. Not for any clinical, therapeutic, or diagnostic use in humans or animals. Not for animal or human consumption.

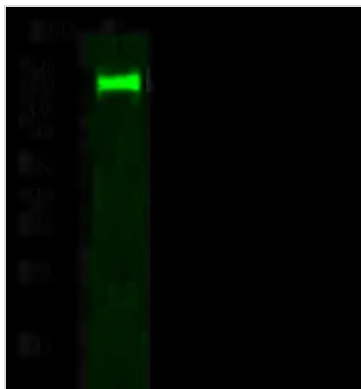
Note

Purchasers shall not, and agree not to enable third parties to, analyze, copy, reverse engineer or otherwise attempt to determine the structure or sequence of the product.

DATA IMAGES

GTX02073 IHC-P Image

IHC-P analysis of human placenta tissue section using GTX02073 LAMP1 antibody [07].

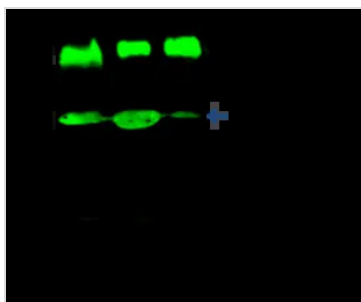
Dilution : 1:60


GTX02073 WB Image

WB analysis of Jurkat whole cell lysate (Lane A) using GTX02073 LAMP1 antibody [07].

Dilution : 1:500

Loading : 30 µg

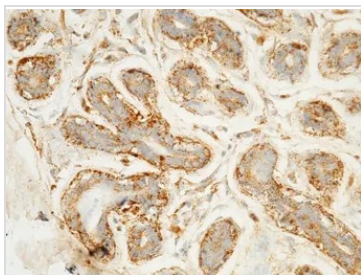

GTX02073 IP Image

IP analysis of HeLa whole cell lysate using GTX02073 LAMP1 antibody [07].

IP antibody : 4 µl per 0.5 mg total whole cell lysate

Dilution : 1:100

50 % Protein G agarose : 15 µl


GTX02073 IHC-P Image

IHC-P analysis of human breast carcinoma tissue section using GTX02073 LAMP1 antibody [07].

Dilution : 1:60



For full product information, images and publications, please visit our [website](https://www.genetex.com).