

CD162 antibody [10]

Cat. No. GTX02089

Host	Mouse
Clonality	Monoclonal
Isotype	IgG1
Application	WB
Reactivity	Human

Package
100 µl

APPLICATION

Application Note

*Optimal dilutions/concentrations should be determined by the researcher.

Suggested dilution	Recommended dilution
WB	1:500-1:1000

Not tested in other applications.

Calculated MW	43 kDa. (Note)
Observed MW	120 kDa. The observed M.W. is based on the following publication. PMID: 22143985

PROPERTIES

Form	Liquid
Buffer	Filter-sterilized PBS
Preservative	No preservative
Storage	Store as concentrated solution. Centrifuge briefly prior to opening vial. For short-term storage (1-2 weeks), store at 4°C. For long-term storage, aliquot and store at -20°C or below. Avoid multiple freeze-thaw cycles.
Concentration	Batch dependent (Please refer to the vial label for the specific concentration.)
Immunogen	Recombinant Human PSGL-1 / CD162 / SELPLG protein
Purification	Purified by Protein A
Conjugation	Unconjugated

Note

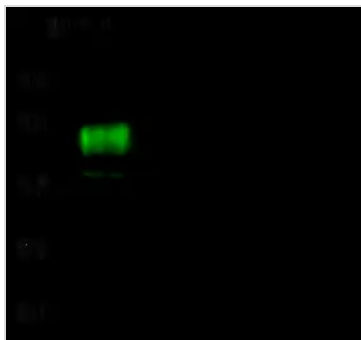
For laboratory research use only. Not for any clinical, therapeutic, or diagnostic use in humans or animals. Not for animal or human consumption.

Purchasers shall not, and agree not to enable third parties to, analyze, copy, reverse engineer or otherwise attempt to determine the structure or sequence of the product.



For full product information, images and publications, please visit our [website](#).

DATA IMAGES



GTX02089 WB Image

WB analysis of Jurkat whole cell lysate (Lane A) using GTX02089 CD162 antibody [10].

Dilution : 1:500

Loading : 30 µg



For full product information, images and publications, please visit our [website](#).