

AKR1B1 antibody [109]

Cat. No. GTX02098

Host	Rabbit
Clonality	Monoclonal
Isotype	IgG
Application	WB, IP
Reactivity	Human

Package
100 µl

APPLICATION

Application Note

*Optimal dilutions/concentrations should be determined by the researcher.

Suggested dilution	Recommended dilution
WB	1:500-1:2000
IP	0.2-1 µl/mg of lysate

Not tested in other applications.

Calculated MW 36 kDa. ([Note](#))

PROPERTIES

Form	Liquid
Buffer	Filter-sterilized PBS
Preservative	No preservative
Storage	Store as concentrated solution. Centrifuge briefly prior to opening vial. For short-term storage (1-2 weeks), store at 4°C. For long-term storage, aliquot and store at -20°C or below. Avoid multiple freeze-thaw cycles.
Concentration	Batch dependent (Please refer to the vial label for the specific concentration.)
Immunogen	Recombinant Human AKR1B1 protein
Purification	Purified by Protein A
Conjugation	Unconjugated

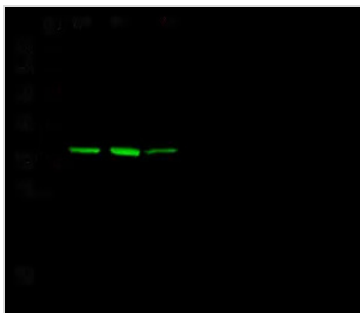
Note

For laboratory research use only. Not for any clinical, therapeutic, or diagnostic use in humans or animals. Not for animal or human consumption.

Purchasers shall not, and agree not to enable third parties to, analyze, copy, reverse engineer or otherwise attempt to determine the structure or sequence of the product.



For full product information, images and publications, please visit our [website](#).

DATA IMAGES

GTx02098 WB Image

WB analysis of various samples using GTx02098 AKR1B1 antibody [109].

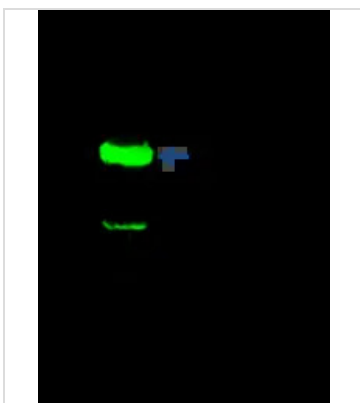
Lane A : Jurkat whole cell lysate

Lane B : HeLa whole cell lysate

Lane C : A431 whole cell lysate

Dilution : 1:500

Loading : 30 µg


GTx02098 IP Image

IP analysis of Jurkat whole cell lysate using GTx02098 AKR1B1 antibody [109].

IP antibody : 0.5 µl per 0.5 mg total whole cell lysate

Dilution : 1:500

50 % Protein G agarose : 15 µl



For full product information, images and publications, please visit our [website](https://www.genetex.com).