

PTBP1 antibody

Cat. No. GTX02176

Host	Rabbit
Clonality	Polyclonal
Isotype	IgG
Application	WB, ICC/IF, IHC-P, IP
Reactivity	Human, Mouse, Rat

Package
100 µl

APPLICATION

Application Note

*Optimal dilutions/concentrations should be determined by the researcher.

Suggested dilution	Recommended dilution
WB	1:500-1:2000
ICC/IF	1:300-1:10000
IHC-P	1:1000-1:5000
IP	1-4 µl/mg of lysate

Not tested in other applications.

Calculated MW 57 kDa. ([Note](#))

PROPERTIES

Form	Liquid
Buffer	Filter-sterilized PBS
Preservative	No preservative
Storage	Store as concentrated solution. Centrifuge briefly prior to opening vial. For short-term storage (1-2 weeks), store at 4°C. For long-term storage, aliquot and store at -20°C or below. Avoid multiple freeze-thaw cycles.
Concentration	Batch dependent (Please refer to the vial label for the specific concentration.)
Immunogen	A synthetic peptide corresponding to the N-terminus of the Human PTBP1
Purification	Purified by Protein A and Antigen Affinity
Conjugation	Unconjugated

Note

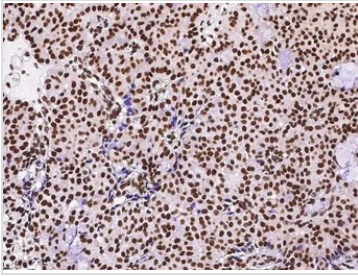
For laboratory research use only. Not for any clinical, therapeutic, or diagnostic use in humans or animals. Not for animal or human consumption.

Purchasers shall not, and agree not to enable third parties to, analyze, copy, reverse engineer or otherwise attempt to determine the structure or sequence of the product.



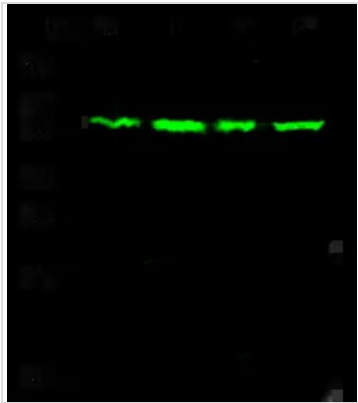
For full product information, images and publications, please visit our [website](#).

DATA IMAGES



GTX02176 IHC-P Image

IHC-P analysis of human breast carcinoma tissue section using GTX02176 PTBP1 antibody.
Dilution : 1:2000



GTX02176 WB Image

WB analysis of various samples using GTX02176 PTBP1 antibody.

Lane A : HepG2 whole cell lysate

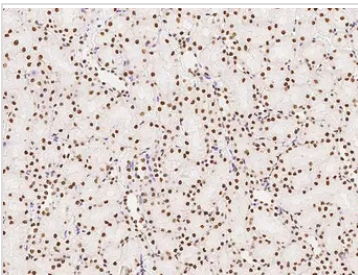
Lane B : Jurkat whole cell lysate

Lane C : HeLa whole cell lysate

Lane D : A431 whole cell lysate

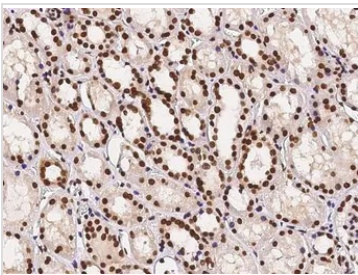
Dilution : 1:500

Loading : 30 µg



GTX02176 IHC-P Image

IHC-P analysis of rat kidney tissue section using GTX02176 PTBP1 antibody.
Dilution : 1:2000



GTX02176 IHC-P Image

IHC-P analysis of human kidney tissue section using GTX02176 PTBP1 antibody.
Dilution : 1:2000



For full product information, images and publications, please visit our [website](https://www.genetex.com).