

# CD73 antibody

**Cat. No. GTX02215**

<b>Host</b>	Rabbit
<b>Clonality</b>	Polyclonal
<b>Isotype</b>	IgG
<b>Application</b>	WB, IHC-P, IP
<b>Reactivity</b>	Human, Rat

**Package**  
100 µl

## APPLICATION

### Application Note

\*Optimal dilutions/concentrations should be determined by the researcher.

Suggested dilution	Recommended dilution
WB	1:500-1:1000
IHC-P	1:2500-1:10000
IP	0.1-0.5 µl/mg of lysate

Not tested in other applications.

## PROPERTIES

<b>Form</b>	Liquid
<b>Buffer</b>	Filter-sterilized PBS
<b>Preservative</b>	No preservative
<b>Storage</b>	Store as concentrated solution. Centrifuge briefly prior to opening vial. For short-term storage (1-2 weeks), store at 4°C. For long-term storage, aliquot and store at -20°C or below. Avoid multiple freeze-thaw cycles.
<b>Concentration</b>	Batch dependent (Please refer to the vial label for the specific concentration.)
<b>Immunogen</b>	Recombinant Rat CD73 / NT5E protein
<b>Purification</b>	Purified by Protein A and Antigen Affinity
<b>Conjugation</b>	Unconjugated

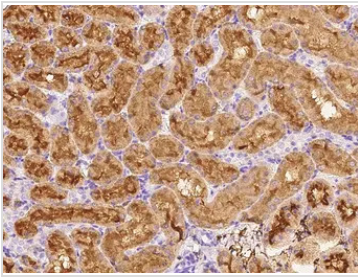
### Note

For laboratory research use only. Not for any clinical, therapeutic, or diagnostic use in humans or animals. Not for animal or human consumption.

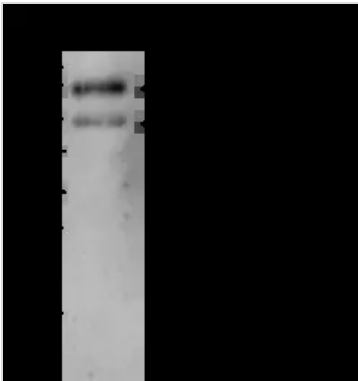
Purchasers shall not, and agree not to enable third parties to, analyze, copy, reverse engineer or otherwise attempt to determine the structure or sequence of the product.



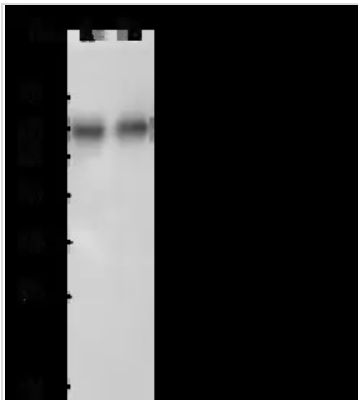
For full product information, images and publications, please visit our [website](#).

**DATA IMAGES**

**GTx02215 IHC-P Image**

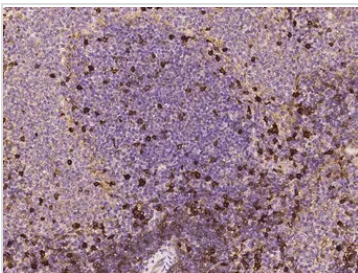
IHC-P analysis of rat kidney tissue section using GTx02215 CD73 antibody.  
Dilution : 1:5000


**GTx02215 IP Image**

IP analysis of A375 whole cell lysate using GTx02215 CD73 antibody.  
IP antibody : 0.5 µl per 0.5 mg total whole cell lysate  
Dilution : 1:500  
Immunomagnetic beads Protein A/G : 60 µg


**GTx02215 WB Image**

WB analysis of various samples using GTx02215 CD73 antibody.  
Lane A : Rat spleen tissue lysate  
Lane B : Rat liver tissue lysate  
Dilution : 1:500  
Loading : 30 µg


**GTx02215 IHC-P Image**

IHC-P analysis of rat spleen tissue section using GTx02215 CD73 antibody.  
Dilution : 1:5000



For full product information, images and publications, please visit our [website](https://www.genetex.com).