

## Aconitase 2 antibody

Cat. No. GTX02248

Host	Rabbit
Clonality	Polyclonal
Isotype	IgG
Application	WB, IHC-P, IP
Reactivity	Human, Mouse, Rat

Package  
100 µl

## APPLICATION

## Application Note

\*Optimal dilutions/concentrations should be determined by the researcher.

Suggested dilution	Recommended dilution
WB	1:500-1:2000
IHC-P	1:500-1:2000
IP	1-4 µl/mg of lysate

Not tested in other applications.

Calculated MW 85 kDa. ( [Note](#) )

## PROPERTIES

Form	Liquid
Buffer	Filter-sterilized PBS
Preservative	No preservative
Storage	Store as concentrated solution. Centrifuge briefly prior to opening vial. For short-term storage (1-2 weeks), store at 4°C. For long-term storage, aliquot and store at -20°C or below. Avoid multiple freeze-thaw cycles.
Concentration	Batch dependent (Please refer to the vial label for the specific concentration.)
Immunogen	Recombinant Human ACO2 / Aconitase 2 protein
Purification	Purified by Protein A and Antigen Affinity
Conjugation	Unconjugated

## Note

For laboratory research use only. Not for any clinical, therapeutic, or diagnostic use in humans or animals. Not for animal or human consumption.

Purchasers shall not, and agree not to enable third parties to, analyze, copy, reverse engineer or otherwise attempt to determine the structure or sequence of the product.



For full product information, images and publications, please visit our [website](#).

**DATA IMAGES**

**GTX02248 WB Image**

WB analysis of various samples using GTX02248 Aconitase 2 antibody.

Lane A : Rat heart tissue lysate

Lane B : Rat brain tissue lysate

Lane C : Mouse brain tissue lysate

Lane D : Jurkat whole cell lysate

Dilution : 1:500

Loading : 30 µg


**GTX02248 IP Image**

IP analysis of K562 whole cell lysate using GTX02248 Aconitase 2 antibody.

IP antibody : 4 µl per 0.5 mg total whole cell lysate

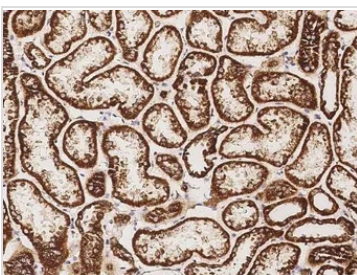
Dilution : 1:100

50 % Protein G agarose : 15 µl


**GTX02248 IHC-P Image**

IHC-P analysis of human skeletal muscle tissue section using GTX02248 Aconitase 2 antibody.

Dilution : 1:1000


**GTX02248 IHC-P Image**

IHC-P analysis of human kidney tissue section using GTX02248 Aconitase 2 antibody.

Dilution : 1:1000



For full product information, images and publications, please visit our [website](https://www.genetex.com).