

Profilin 2 antibody

Cat. No. GTX02270

Host	Rabbit
Clonality	Polyclonal
Isotype	IgG
Applications	WB, IHC-P
Reactivity	Human

Package
100 µl

Applications

Application Note

*Optimal dilutions/concentrations should be determined by the researcher.

Suggested dilution	Recommended dilution
WB	1:500-1:2000
IHC-P	1:2500-1:10000

Not tested in other applications.

Calculated MW 15 kDa. ([Note](#))

Properties

Form	Liquid
Buffer	Filter-sterilized PBS
Preservative	No preservative
Storage	Store as concentrated solution. Centrifuge briefly prior to opening vial. For short-term storage (1-2 weeks), store at 4°C. For long-term storage, aliquot and store at -20°C or below. Avoid multiple freeze-thaw cycles.
Concentration	Batch dependent (Please refer to the vial label for the specific concentration.)
Immunogen	Recombinant Human Profilin 2 / PFN2 protein
Purification	Purified by Protein A and Antigen Affinity
Conjugation	Unconjugated

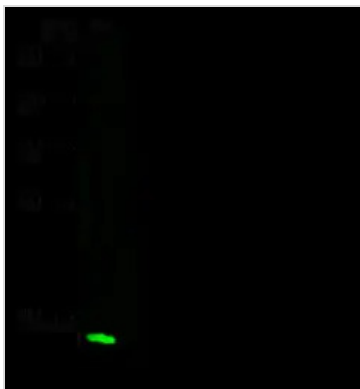
Note

For laboratory research use only. Not for any clinical, therapeutic, or diagnostic use in humans or animals. Not for animal or human consumption.

Purchasers shall not, and agree not to enable third parties to, analyze, copy, reverse engineer or otherwise attempt to determine the structure or sequence of the product.



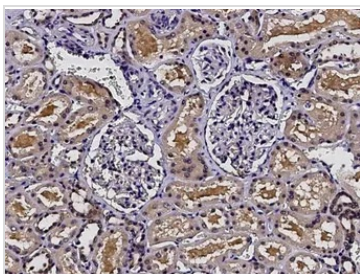
For full product information, images and publications, please visit our [website](#).

DATA IMAGES

GTx02270 WB Image

WB analysis of H1299 whole cell lysate (Lane A) using GTx02270 Profilin 2 antibody.

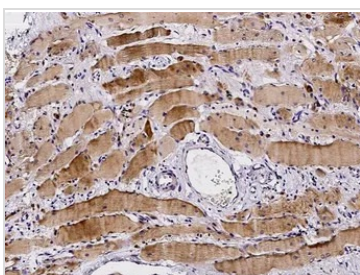
Dilution : 1:500

Loading : 30 µg


GTx02270 IHC-P Image

IHC-P analysis of human kidney tissue section using GTx02270 Profilin 2 antibody.

Dilution : 1:10000


GTx02270 IHC-P Image

IHC-P analysis of human skeletal muscle tissue section using GTx02270 Profilin 2 antibody.

Dilution : 1:10000



For full product information, images and publications, please visit our [website](https://www.genetex.com).