

# DDX5 antibody

**Cat. No. GTX02304**

<b>Host</b>	Rabbit
<b>Clonality</b>	Polyclonal
<b>Isotype</b>	IgG
<b>Application</b>	WB, ICC/IF, IP
<b>Reactivity</b>	Human, Rat

**Package**  
100 µl

## APPLICATION

### Application Note

\*Optimal dilutions/concentrations should be determined by the researcher.

Suggested dilution	Recommended dilution
WB	1:500-1:2000
ICC/IF	1:300-1:10000
IP	4-8 µl/mg of lysate

Not tested in other applications.

**Calculated MW** 69 kDa. ( [Note](#) )

## PROPERTIES

<b>Form</b>	Liquid
<b>Buffer</b>	Filter-sterilized PBS
<b>Preservative</b>	No preservative
<b>Storage</b>	Store as concentrated solution. Centrifuge briefly prior to opening vial. For short-term storage (1-2 weeks), store at 4°C. For long-term storage, aliquot and store at -20°C or below. Avoid multiple freeze-thaw cycles.
<b>Concentration</b>	Batch dependent (Please refer to the vial label for the specific concentration.)
<b>Immunogen</b>	A synthetic peptide corresponding to the C-terminus of the Human DDX5
<b>Purification</b>	Purified by Protein A and Antigen Affinity
<b>Conjugation</b>	Unconjugated

### Note

For laboratory research use only. Not for any clinical, therapeutic, or diagnostic use in humans or animals. Not for animal or human consumption.

Purchasers shall not, and agree not to enable third parties to, analyze, copy, reverse engineer or otherwise attempt to determine the structure or sequence of the product.



For full product information, images and publications, please visit our [website](#).

## DATA IMAGES



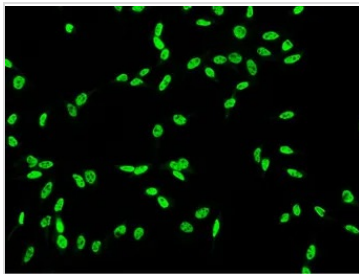
### GTX02304 IP Image

IP analysis of PC-3 whole cell lysate using GTX02304 DDX5 antibody.

IP antibody : 4  $\mu$ l per 0.5 mg total whole cell lysate

Dilution : 1:100

50 % Protein G agarose : 15  $\mu$ l



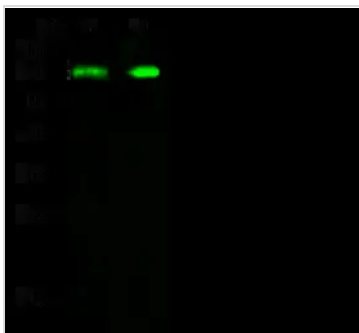
### GTX02304 ICC/IF Image

ICC/IF analysis of PFA-fixed HeLa cells using GTX02304 DDX5 antibody.

Green : Primary antibody

Dilution : 1:1000

Permeabilization : 0.3% Triton X-100



### GTX02304 WB Image

WB analysis of various samples using GTX02304 DDX5 antibody.

Lane A : HeLa whole cell lysate

Lane B : PC-12 whole cell lysate

Dilution : 1:500

Loading : 30  $\mu$ g



For full product information, images and publications, please visit our [website](https://www.genetex.com).