

## 14-3-3 sigma antibody

Cat. No. GTX02307

Host	Rabbit
Clonality	Polyclonal
Isotype	IgG
Application	WB, ICC/IF, IP
Reactivity	Human, Rat

Package  
100 µl

## APPLICATION

## Application Note

\*Optimal dilutions/concentrations should be determined by the researcher.

Suggested dilution	Recommended dilution
WB	1:500-1:2000
ICC/IF	1:300-1:10000
IP	1-4 µl/mg of lysate

Not tested in other applications.

Calculated MW 28 kDa. ( [Note](#) )

## PROPERTIES

Form	Liquid
Buffer	Filter-sterilized PBS
Preservative	No preservative
Storage	Store as concentrated solution. Centrifuge briefly prior to opening vial. For short-term storage (1-2 weeks), store at 4°C. For long-term storage, aliquot and store at -20°C or below. Avoid multiple freeze-thaw cycles.
Concentration	Batch dependent (Please refer to the vial label for the specific concentration.)
Immunogen	Recombinant Human 14-3-3 sigma / Stratifin / YWHAS protein
Purification	Purified by Protein A and Antigen Affinity
Conjugation	Unconjugated

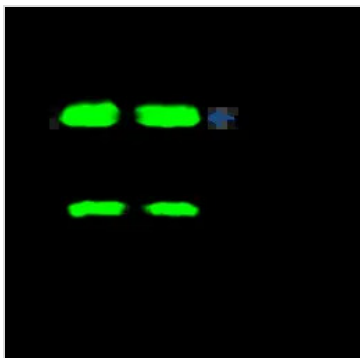
## Note

For laboratory research use only. Not for any clinical, therapeutic, or diagnostic use in humans or animals. Not for animal or human consumption.

Purchasers shall not, and agree not to enable third parties to, analyze, copy, reverse engineer or otherwise attempt to determine the structure or sequence of the product.



For full product information, images and publications, please visit our [website](#).

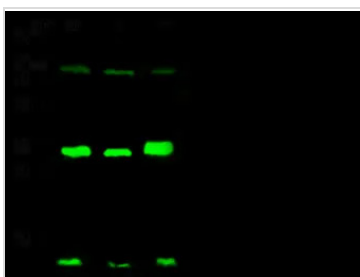
**DATA IMAGES**

**GTX02307 IP Image**

IP analysis of HeLa whole cell lysate using GTX02307 14-3-3 sigma antibody.

IP antibody : 2 µl per 0.5 mg total whole cell lysate

Dilution : 1:100

50 % Protein G agarose : 15 µl


**GTX02307 WB Image**

WB analysis of various samples using GTX02307 14-3-3 sigma antibody.

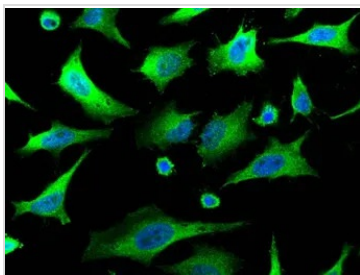
Lane A : HeLa whole cell lysate

Lane B : A549 whole cell lysate

Lane C : PC-12 whole cell lysate

Dilution : 1:500

Loading : 30 µg


**GTX02307 ICC/IF Image**

ICC/IF analysis of PFA-fixed HeLa cells using GTX02307 14-3-3 sigma antibody.

Green : Primary antibody

Blue : DAPI

Dilution : 1:1000

Permeabilization : 0.3% Triton X-100



For full product information, images and publications, please visit our [website](https://www.genetex.com).