

alpha 1 Antitrypsin antibody

Cat. No. GTX02323

Host	Rabbit
Clonality	Polyclonal
Isotype	IgG
Application	WB, IP
Reactivity	Human, Rat

Package
100 µl

APPLICATION

Application Note

*Optimal dilutions/concentrations should be determined by the researcher.

Suggested dilution	Recommended dilution
WB	1:500-1:1000
IP	0.1-0.5 µl/mg of lysate

Not tested in other applications.

Calculated MW 46 kDa. ([Note](#))

PROPERTIES

Form	Liquid
Buffer	Filter-sterilized PBS
Preservative	No preservative
Storage	Store as concentrated solution. Centrifuge briefly prior to opening vial. For short-term storage (1-2 weeks), store at 4°C. For long-term storage, aliquot and store at -20°C or below. Avoid multiple freeze-thaw cycles.
Concentration	Batch dependent (Please refer to the vial label for the specific concentration.)
Immunogen	Recombinant Rat SerpinA1 protein
Purification	Purified by Protein A and Antigen Affinity
Conjugation	Unconjugated

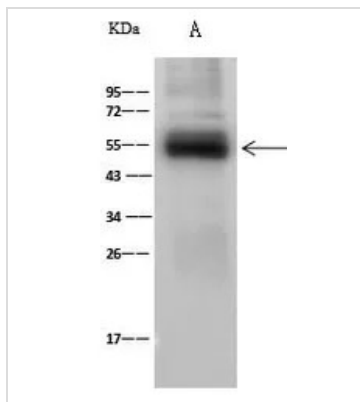
Note

For laboratory research use only. Not for any clinical, therapeutic, or diagnostic use in humans or animals. Not for animal or human consumption.

Purchasers shall not, and agree not to enable third parties to, analyze, copy, reverse engineer or otherwise attempt to determine the structure or sequence of the product.



For full product information, images and publications, please visit our [website](#).

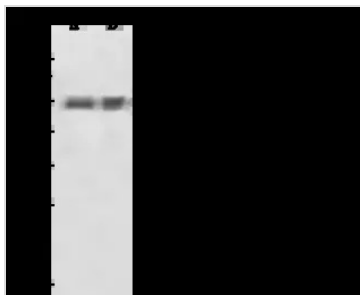
DATA IMAGES

GTx02323 IP Image

IP analysis of MCF-7 whole cell lysate using GTx02323 alpha 1 Antitrypsin antibody.

IP antibody : 0.5 µl per 0.5 mg total whole cell lysate

Dilution : 1:500

Immunomagnetic beads Protein A/G : 60 µg


GTx02323 WB Image

WB analysis of various samples using GTx02323 alpha 1 Antitrypsin antibody.

Lane A : Rat Liver tissue lysate

Lane B : Rat Spleen tissue lysate

Dilution : 1:500

Loading : 30 µg



For full product information, images and publications, please visit our [website](https://www.genetex.com).