

IGFBP7 antibody

Cat. No. GTX02336

Host	Rabbit
Clonality	Polyclonal
Isotype	IgG
Application	WB, IP
Reactivity	Human, Mouse, Rat

Package
100 µl

APPLICATION

Application Note

*Optimal dilutions/concentrations should be determined by the researcher.

Suggested dilution	Recommended dilution
WB	1:500-1:1000
IP	0.2-1 µl/mg of lysate

Not tested in other applications.

Calculated MW 29 kDa. ([Note](#))

PROPERTIES

Form	Liquid
Buffer	Filter-sterilized PBS
Preservative	No preservative
Storage	Store as concentrated solution. Centrifuge briefly prior to opening vial. For short-term storage (1-2 weeks), store at 4°C. For long-term storage, aliquot and store at -20°C or below. Avoid multiple freeze-thaw cycles.
Concentration	Batch dependent (Please refer to the vial label for the specific concentration.)
Immunogen	Recombinant Human IGFBP7 protein
Purification	Purified by Protein A and Antigen Affinity
Conjugation	Unconjugated

Note

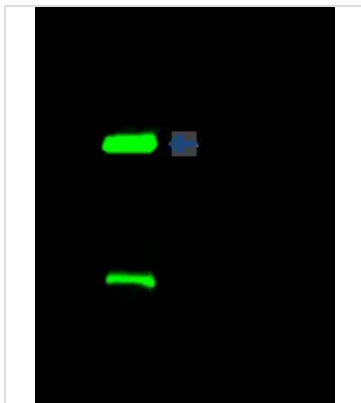
For laboratory research use only. Not for any clinical, therapeutic, or diagnostic use in humans or animals. Not for animal or human consumption.

Purchasers shall not, and agree not to enable third parties to, analyze, copy, reverse engineer or otherwise attempt to determine the structure or sequence of the product.



For full product information, images and publications, please visit our [website](#).

DATA IMAGES



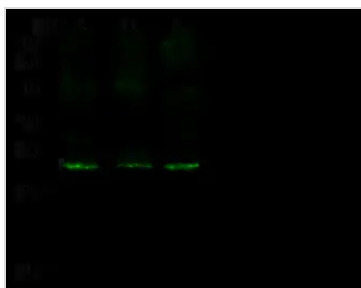
GTx02336 IP Image

IP analysis of THP-1 whole cell lysate using GTX02336 IGFBP7 antibody.

IP antibody : 1 μ l per 0.5 mg total whole cell lysate

Dilution : 1:500

Immunomagnetic beads Protein G : 60 μ g



GTx02336 WB Image

WB analysis of various samples using GTX02336 IGFBP7 antibody.

Lane A : THP-1 whole cell lysate

Lane B : Rat brain tissue lysate

Lane C : Mouse kidney tissue lysate

Dilution : 1:500

Loading : 30 μ g



For full product information, images and publications, please visit our [website](https://www.genetex.com).