

# alpha 1 Antitrypsin antibody

**Cat. No. GTX02371**

<b>Host</b>	Rabbit
<b>Clonality</b>	Polyclonal
<b>Isotype</b>	IgG
<b>Application</b>	WB, IP
<b>Reactivity</b>	Human, Rat

**Package**  
100 µl

## APPLICATION

### Application Note

\*Optimal dilutions/concentrations should be determined by the researcher.

Suggested dilution	Recommended dilution
WB	1:500-1:1000
IP	0.1-0.5 µl/mg of lysate

Not tested in other applications.

**Calculated MW** 46 kDa. ( [Note](#) )

## PROPERTIES

<b>Form</b>	Liquid
<b>Buffer</b>	Filter-sterilized PBS
<b>Preservative</b>	No preservative
<b>Storage</b>	Store as concentrated solution. Centrifuge briefly prior to opening vial. For short-term storage (1-2 weeks), store at 4°C. For long-term storage, aliquot and store at -20°C or below. Avoid multiple freeze-thaw cycles.
<b>Concentration</b>	Batch dependent (Please refer to the vial label for the specific concentration.)
<b>Immunogen</b>	Recombinant Rat SerpinA1 protein
<b>Purification</b>	Purified by Protein A and Antigen Affinity
<b>Conjugation</b>	Unconjugated

### Note

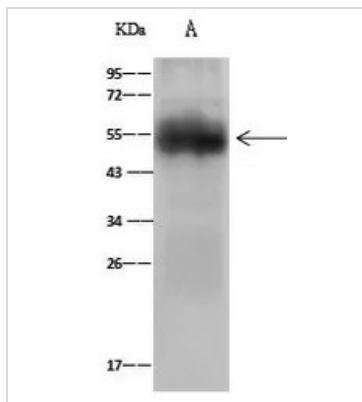
For laboratory research use only. Not for any clinical, therapeutic, or diagnostic use in humans or animals. Not for animal or human consumption.

Purchasers shall not, and agree not to enable third parties to, analyze, copy, reverse engineer or otherwise attempt to determine the structure or sequence of the product.



For full product information, images and publications, please visit our [website](#).

## DATA IMAGES



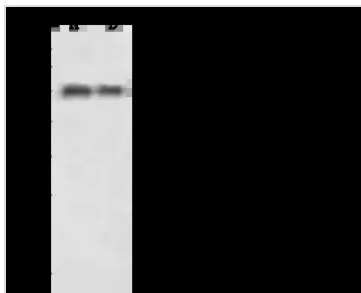
### GTx02371 IP Image

IP analysis of MCF-7 whole cell lysate using GTx02371 alpha 1 Antitrypsin antibody.

IP antibody : 0.5 µl per 0.5 mg total whole cell lysate

Dilution : 1:500

Immunomagnetic beads Protein A/G : 60 µg



### GTx02371 WB Image

WB analysis of various samples using GTx02371 alpha 1 Antitrypsin antibody.

Lane A : Rat Liver tissue lysate

Lane B : Rat Spleen tissue lysate

Dilution : 1:500

Loading : 30 µg



For full product information, images and publications, please visit our [website](https://www.genetex.com).