

# p107 antibody

**Cat. No. GTX02375**

<b>Host</b>	Rabbit
<b>Clonality</b>	Polyclonal
<b>Isotype</b>	IgG
<b>Application</b>	WB, ICC/IF
<b>Reactivity</b>	Human

**Package**  
100 µl

## APPLICATION

### Application Note

\*Optimal dilutions/concentrations should be determined by the researcher.

Suggested dilution	Recommended dilution
WB	1:500-1:2000
ICC/IF	1:100-1:500

Not tested in other applications.

**Calculated MW** 121 kDa. ([Note](#))

## PROPERTIES

<b>Form</b>	Liquid
<b>Buffer</b>	PBS
<b>Preservative</b>	0.03% ProClin 300
<b>Storage</b>	Store as concentrated solution. Centrifuge briefly prior to opening vial. For short-term storage (1-2 weeks), store at 4°C. For long-term storage, aliquot and store at -20°C or below. Avoid multiple freeze-thaw cycles.
<b>Concentration</b>	Batch dependent (Please refer to the vial label for the specific concentration.)
<b>Immunogen</b>	E. coli-derived Human RBL1 fragment
<b>Purification</b>	Purified by Protein A and Antigen Affinity
<b>Conjugation</b>	Unconjugated

### Note

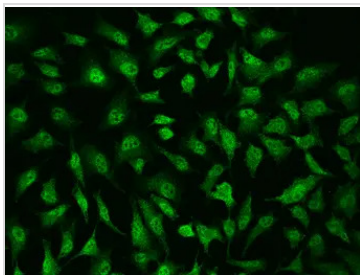
For laboratory research use only. Not for any clinical, therapeutic, or diagnostic use in humans or animals. Not for animal or human consumption.

Purchasers shall not, and agree not to enable third parties to, analyze, copy, reverse engineer or otherwise attempt to determine the structure or sequence of the product.



For full product information, images and publications, please visit our [website](#).

## DATA IMAGES



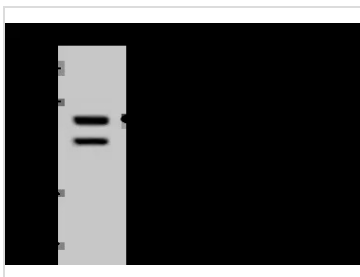
### GTx02375 ICC/IF Image

ICC/IF analysis of PFA-fixed HeLa cells using GTx02375 p107 antibody.

Green : Primary antibody

Dilution : 1:200

Permeabilization : 0.1% Triton X-100



### GTx02375 WB Image

WB analysis of U-251 MG whole cell lysate (Lane A) using GTx02375 p107 antibody.

Dilution : 1:500

Loading : 30 µg



For full product information, images and publications, please visit our [website](#).