

IL12A / IL12 p35 antibody

Cat. No. GTX02379

Host	Rabbit
Clonality	Polyclonal
Isotype	IgG
Applications	WB, IHC-P
Reactivity	Human

Package
100 µl

Applications

Application Note

*Optimal dilutions/concentrations should be determined by the researcher.

Suggested dilution	Recommended dilution
WB	1:500-1:2000
IHC-P	1:500-1:2000

Not tested in other applications.

Calculated MW 25 kDa. ([Note](#))

Properties

Form	Liquid
Buffer	Filter-sterilized PBS
Preservative	No preservatives
Storage	Store as concentrated solution. Centrifuge briefly prior to opening vial. For short-term storage (1-2 weeks), store at 4°C. For long-term storage, aliquot and store at -20°C or below. Avoid multiple freeze-thaw cycles.
Concentration	Batch dependent (Please refer to the vial label for the specific concentration.)
Immunogen	Recombinant Human IL12A protein
Purification	Purified by Protein A and Antigen Affinity
Conjugation	Unconjugated

Note

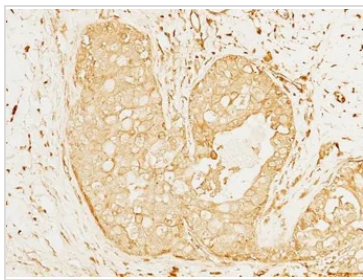
For laboratory research use only. Not for any clinical, therapeutic, or diagnostic use in humans or animals. Not for animal or human consumption.

Purchasers shall not, and agree not to enable third parties to, analyze, copy, reverse engineer or otherwise attempt to determine the structure or sequence of the product.



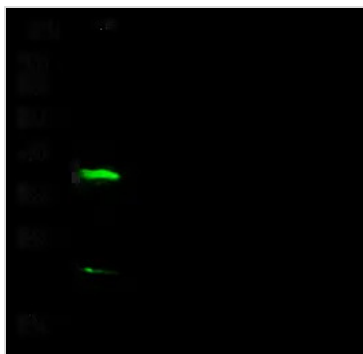
For full product information, images and publications, please visit our [website](#).

DATA IMAGES



GTx02379 IHC-P Image

IHC-P analysis of human breast carcinoma tissue section using GTx02379 IL12A / IL12 p35 antibody.
Dilution : 1:1000



GTx02379 WB Image

WB analysis of MOLT-4 whole cell lysate (Lane A) using GTx02379 IL12A / IL12 p35 antibody.
Dilution : 1:500
Loading : 30 µg



For full product information, images and publications, please visit our [website](#).