

PSMD2 antibody

Cat. No. GTX02394

Host	Rabbit
Clonality	Polyclonal
Isotype	IgG
Application	WB, IP
Reactivity	Human

Package
100 µl

APPLICATION

Application Note

*Optimal dilutions/concentrations should be determined by the researcher.

Suggested dilution	Recommended dilution
WB	1:500-1:2000
IP	5-10 µl/mg of lysate

Not tested in other applications.

Calculated MW 100 kDa. ([Note](#))

PROPERTIES

Form	Liquid
Buffer	PBS
Preservative	0.03% ProClin 300
Storage	Store as concentrated solution. Centrifuge briefly prior to opening vial. For short-term storage (1-2 weeks), store at 4°C. For long-term storage, aliquot and store at -20°C or below. Avoid multiple freeze-thaw cycles.
Concentration	Batch dependent (Please refer to the vial label for the specific concentration.)
Immunogen	A synthetic peptide corresponding to the N-terminus of the Human PSMD2
Purification	Purified by Protein A and Antigen Affinity
Conjugation	Unconjugated

Note

For laboratory research use only. Not for any clinical, therapeutic, or diagnostic use in humans or animals. Not for animal or human consumption.

Purchasers shall not, and agree not to enable third parties to, analyze, copy, reverse engineer or otherwise attempt to determine the structure or sequence of the product.



For full product information, images and publications, please visit our [website](#).

DATA IMAGES



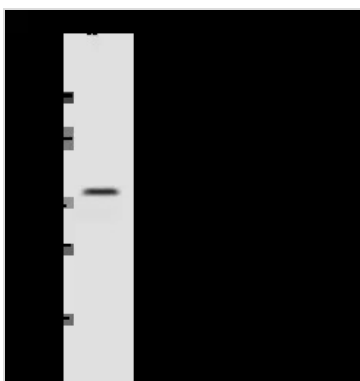
GTX02394 IP Image

IP analysis of Jurkat whole cell lysate using GTX02394 PSMD2 antibody.

IP antibody : 4 μ l per 0.5 mg total whole cell lysate

Dilution : 1:100

Immunomagnetic beads Protein A/G : 60 μ g



GTX02394 WB Image

WB analysis of Jurkat whole cell lysate (Lane A) using GTX02394 PSMD2 antibody.

Dilution : 1:500

Loading : 30 μ g



For full product information, images and publications, please visit our [website](#).