

## CPEB4 antibody

Cat. No. GTX02529

Host	Rabbit
Clonality	Polyclonal
Isotype	IgG
Applications	WB, IHC-P
Reactivity	Human, Mouse

Package  
400 µl

## Applications

## Application Note

\*Optimal dilutions/concentrations should be determined by the researcher.

Suggested dilution	Recommended dilution
WB	1:1000
IHC-P	1:50-1:100

Not tested in other applications.

Calculated MW 80 kDa. ( [Note](#) )

## Properties

Form	Liquid
Buffer	PBS
Preservative	0.09% Sodium azide
Storage	Store as concentrated solution. Centrifuge briefly prior to opening vial. For short-term storage (1-2 weeks), store at 4°C. For long-term storage, aliquot and store at -20°C or below. Avoid multiple freeze-thaw cycles.
Concentration	Batch dependent (Please refer to the vial label for the specific concentration.)
Immunogen	This CPEB4 antibody is generated from rabbits immunized with a KLH conjugated synthetic peptide between 109-137 amino acids from the N-terminal region of human CPEB4.
Purification	Protein A purified followed by antigen-affinity chromatography
Conjugation	Unconjugated

## Note

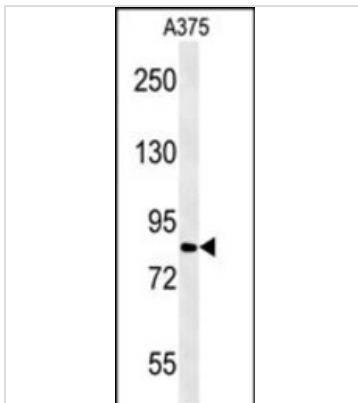
For laboratory research use only. Not for any clinical, therapeutic, or diagnostic use in humans or animals. Not for animal or human consumption.

Purchasers shall not, and agree not to enable third parties to, analyze, copy, reverse engineer or otherwise attempt to determine the structure or sequence of the product.



For full product information, images and publications, please visit our [website](#).

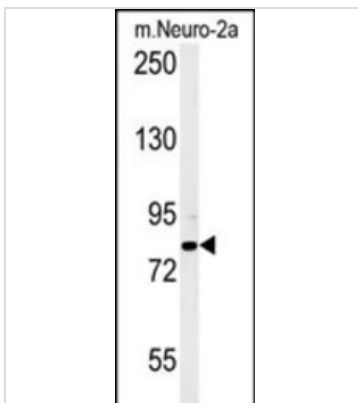
## DATA IMAGES



### GTX02529 WB Image

WB analysis of A375 cell lysate using GTX02529 CPEB4 antibody.

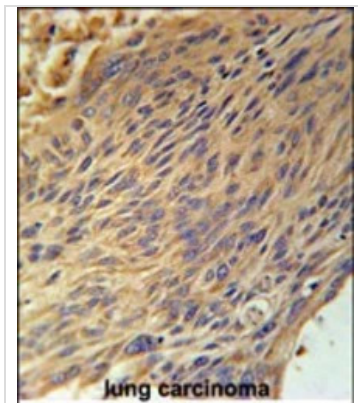
Loading : 15µg



### GTX02529 WB Image

WB analysis of Neuro2a cell lysate using GTX02529 CPEB4 antibody.

Loading : 15µg



### GTX02529 IHC-P Image

IHC-P analysis of human lung carcinoma tissue using GTX02529 CPEB4 antibody.



For full product information, images and publications, please visit our [website](https://www.genetex.com).