

PPAR gamma (phospho Ser112) antibody

Cat. No. GTX02531

Host	Rabbit
Clonality	Polyclonal
Isotype	IgG
Applications	WB, ICC/IF, IHC-P, ELISA
Reactivity	Human, Mouse, Rat

References (1)

Package

100 µl

Applications

Application Note

*Optimal dilutions/concentrations should be determined by the researcher.

Suggested dilution	Recommended dilution
WB	1:500-1:2000
ICC/IF	1:200
IHC-P	1:50-1:200
ELISA	Assay dependent

Not tested in other applications.

Calculated MW 58 kDa. ([Note](#))

Properties

Form	Liquid
Buffer	PBS, 50% Glycerol
Preservative	No preservatives
Storage	Store as concentrated solution. Centrifuge briefly prior to opening vial. For short-term storage (1-2 weeks), store at 4°C. For long-term storage, aliquot and store at -20°C or below. Avoid multiple freeze-thaw cycles.
Concentration	1 mg/ml (Please refer to the vial label for the specific concentration.)
Immunogen	A synthesized peptide derived from human PPAR- gamma around the phosphorylation site of Ser112.
Purification	Purified by affinity purification via sequential chromatography on phospho-peptide and non-phospho-peptide affinity columns From serum
Conjugation	Unconjugated



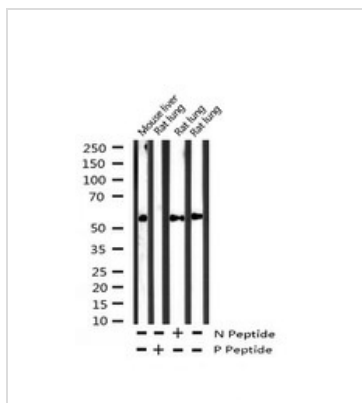
For full product information, images and publications, please visit our [website](#).

For laboratory research use only. Not for any clinical, therapeutic, or diagnostic use in humans or animals. Not for animal or human consumption.

Note

Purchasers shall not, and agree not to enable third parties to, analyze, copy, reverse engineer or otherwise attempt to determine the structure or sequence of the product.

DATA IMAGES

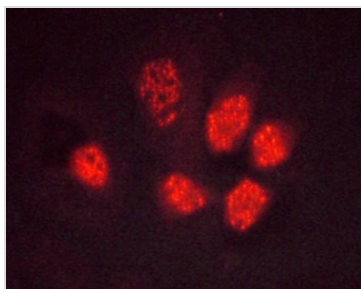


GTX02531 WB Image

WB analysis of extracts from mouse liver and rat lung tissue using GTX02531 PPAR gamma (phospho Ser112) antibody.

N peptide : Non-phospho peptide

P peptide : Phospho peptide

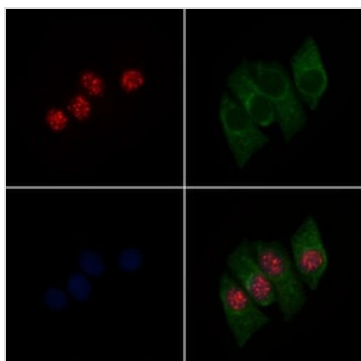


GTX02531 ICC/IF Image

ICC/IF analysis of PFA-fixed HeLa cells using GTX02531 PPAR gamma (phospho Ser112) antibody.

Permeabilization : 0.1% saponin

Dilution : 1:400



GTX02531 ICC/IF Image

ICC/IF analysis of PFA-fixed HepG2 cells (30min of 4μM Forskolin treatment) using GTX02531 PPAR gamma (phospho Ser112) antibody.

Red : Primary antibody

Green : Tubulin

Blue : DAPI

Permeabilization : 0.1% Triton X-100



For full product information, images and publications, please visit our [website](https://www.genetex.com).