

GDNF antibody

Cat. No. GTX02540

| | |
|---------------------|-----------------------------------|
| Host | Rabbit |
| Clonality | Polyclonal |
| Isotype | IgG |
| Applications | WB, IHC-P, FCM |
| Reactivity | Human, Mouse, Rat, Rabbit, Bovine |

References (1)
 Package
 100 µl

Applications

Application Note

*Optimal dilutions/concentrations should be determined by the researcher.

| Suggested dilution | Recommended dilution |
|--------------------|----------------------|
| WB | 1:300-1:1000 |
| IHC-P | 1:200-1:400 |
| FCM | Assay dependent |

Not tested in other applications.

Calculated MW 24 kDa. ([Note](#))

Properties

| | |
|----------------------|--|
| Form | Liquid |
| Buffer | Aqueous buffered solution, 1% BSA, 50% Glycerol |
| Preservative | 0.09% Sodium azide |
| Storage | Store as concentrated solution. Centrifuge briefly prior to opening vial. For short-term storage (1-2 weeks), store at 4°C. For long-term storage, aliquot and store at -20°C or below. Avoid multiple freeze-thaw cycles. |
| Concentration | 1 mg/ml (Please refer to the vial label for the specific concentration.) |
| Immunogen | KLH conjugated synthetic peptide derived from human GDNF (166-211/211) |
| Purification | Protein A purified |
| Conjugation | Unconjugated |

Note

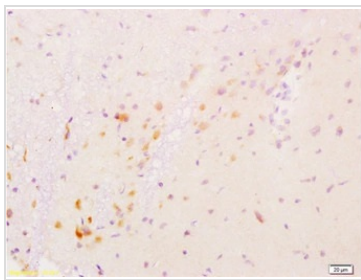
For laboratory research use only. Not for any clinical, therapeutic, or diagnostic use in humans or animals. Not for animal or human consumption.

Purchasers shall not, and agree not to enable third parties to, analyze, copy, reverse engineer or otherwise attempt to determine the structure or sequence of the product.



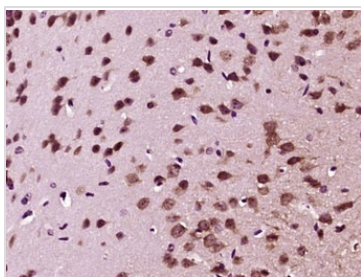
For full product information, images and publications, please visit our [website](#).

DATA IMAGES



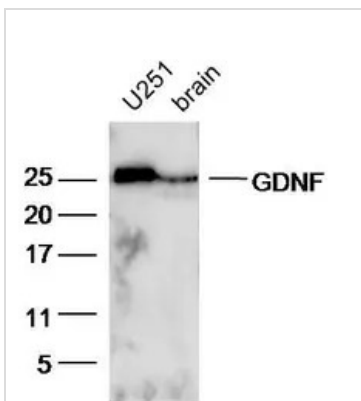
GTX02540 IHC-P Image

IHC-P analysis of rat brain tissue using GTX02540 GDNF antibody.
Dilution : 1:200



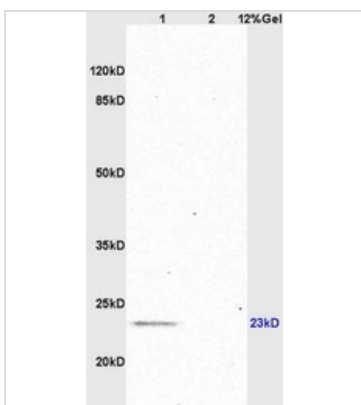
GTX02540 IHC-P Image

IHC-P analysis of mouse brain tissue using GTX02540 GDNF antibody.
Antigen retrieval : Boiling in sodium citrate buffer (pH6) for 15min
Dilution : 1:400



GTX02540 WB Image

WB analysis of U251 cell (lane 1) and mouse brain tissue (lane 2) lysates using GTX02540 GDNF antibody.
Dilution : 1:300



GTX02540 WB Image

WB analysis of rat brain (lane 1) and rat heart (lane 2) tissue lysates using GTX02540 GDNF antibody.
Dilution : 1:200



For full product information, images and publications, please visit our [website](#).