

NTR1 antibody

Cat. No. GTX02541

Host	Rabbit
Clonality	Polyclonal
Isotype	IgG
Application	WB, ICC/IF, IHC-P, IHC-Fr, FACS
Reactivity	Human, Rat

Package

50 µl

APPLICATION

Application Note

*Optimal dilutions/concentrations should be determined by the researcher.

Suggested dilution	Recommended dilution
WB	Assay dependent
ICC/IF	Assay dependent
IHC-P	Assay dependent
IHC-Fr	Assay dependent
FACS	Assay dependent

Not tested in other applications.

Calculated MW 46 kDa. ([Note](#))

PROPERTIES

Form	Liquid
Buffer	PBS, 1% BSA
Preservative	0.05% Sodium azide
Storage	Store as concentrated solution. Centrifuge briefly prior to opening vial. For short-term storage (1-2 weeks), store at 4°C. For long-term storage, aliquot and store at -20°C or below. Avoid multiple freeze-thaw cycles.
Concentration	Batch dependent (Please refer to the vial label for the specific concentration.)
Immunogen	Peptide EQNRSADGQHAGGLVC corresponding to amino acid residues 209-224 of human NTSR1 (2nd extracellular loop).
Purification	Purified by antigen-affinity chromatography
Conjugation	Unconjugated

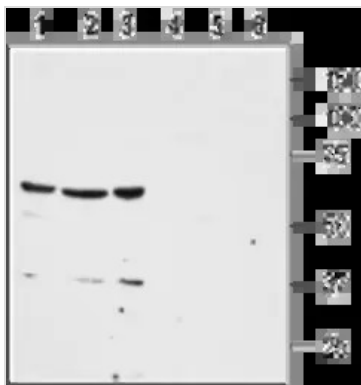


For full product information, images and publications, please visit our [website](#).

For laboratory research use only. Not for any clinical, therapeutic, or diagnostic use in humans or animals. Not for animal or human consumption.

Note

Purchasers shall not, and agree not to enable third parties to, analyze, copy, reverse engineer or otherwise attempt to determine the structure or sequence of the product.

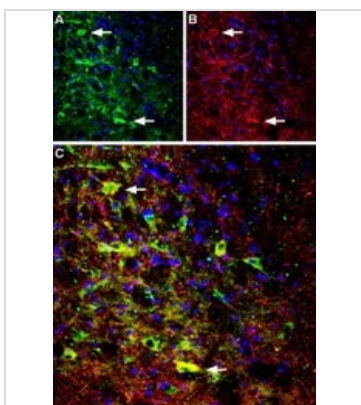
DATA IMAGES

GTx02541 WB Image

WB analysis of HT-29 (lanes 1 and 4), NCI-H526 (lanes 2 and 5), and MDA-MB-468 (lanes 3 and 6) cell lysates using GTx02541 NTR1 antibody.

Lane 1-3 : Primary antibody

Lane 4-6 : Primary antibody prior incubated with immunogen peptide

Dilution : 1:200


GTx02541 IHC-Fr Image

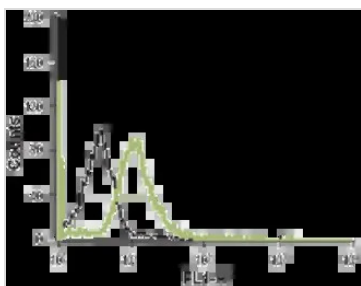
IHC-Fr analysis of rat brain tissue sections using GTx02541 NTR1 antibody. Arrows point at examples of colocalization.

Green : NTR1 antibody

Red : Choline acetyltransferase (ChAT) antibody

Blue : DAPI

Dilution : 1:100


GTx02541 FACS Image

FACS analysis of live intact HL-60 cells using GTx02541 NTR1 antibody.

Green : Primary antibody

Black : Secondary antibody only control

Dilution : 1:20



For full product information, images and publications, please visit our [website](#).