

CD34 antibody

Cat. No. GTX02560

Host	Rabbit
Clonality	Polyclonal
Isotype	IgG
Applications	IHC-P, FCM
Reactivity	Human, Mouse, Rat, Pig

Package
100 µl

Applications

Application Note

*Optimal dilutions/concentrations should be determined by the researcher.

Suggested dilution	Recommended dilution
IHC-P	1:200-1:400
FCM	1:20-1:100

Not tested in other applications.

Properties

Form	Liquid
Buffer	Aqueous buffered solution, 1% BSA, 50% Glycerol
Preservative	0.09% Sodium azide
Storage	Store as concentrated solution. Centrifuge briefly prior to opening vial. For short-term storage (1-2 weeks), store at 4°C. For long-term storage, aliquot and store at -20°C or below. Avoid multiple freeze-thaw cycles.
Concentration	1 mg/ml (Please refer to the vial label for the specific concentration.)
Immunogen	KLH conjugated synthetic peptide derived from human CD34 (210-260).
Purification	Protein A purified
Conjugation	Unconjugated

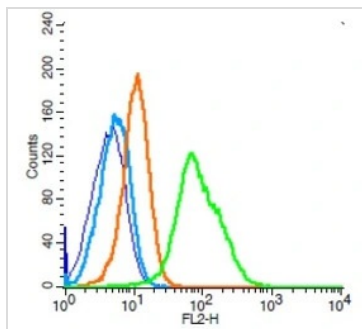
Note

For laboratory research use only. Not for any clinical, therapeutic, or diagnostic use in humans or animals. Not for animal or human consumption.

Purchasers shall not, and agree not to enable third parties to, analyze, copy, reverse engineer or otherwise attempt to determine the structure or sequence of the product.



For full product information, images and publications, please visit our [website](#).

DATA IMAGES

GTX02560 FCM Image

FACS analysis of Raji cells using GTX02560 CD34 antibody.

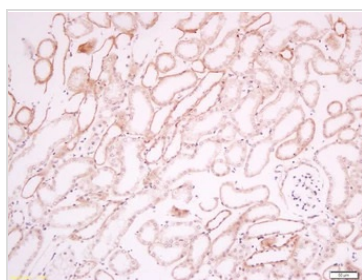
Green : Primary antibody

Blue : Unstained cells

Light blue : Secondary antibody only

Orange : Isotype control

Dilution : 1:100


GTX02560 IHC-P Image

IHC-P analysis of mouse kidney tissue using GTX02560 CD34 antibody.

Antigen retrieval : Boiling in sodium citrate buffer (pH6) for 15min

Dilution : 1:200



For full product information, images and publications, please visit our [website](https://www.genetex.com).