

Rhodopsin antibody [4D2]

Cat. No. GTX02563

Host	Mouse
Clonality	Monoclonal
Isotype	IgG1
Applications	WB, ICC/IF, IHC-P, IHC-Fr, IP, ELISA, IHC
Reactivity	Human, Mouse, Rat, Zebrafish, Bovine, Amphibians

References (4)

Package

100 µg

Applications

Application Note

*Optimal dilutions/concentrations should be determined by the researcher.

Suggested dilution	Recommended dilution
WB	Assay dependent
ICC/IF	Assay dependent
IHC-P	Assay dependent
IHC-Fr	Assay dependent
IP	Assay dependent
ELISA	Assay dependent
IHC	Assay dependent

Not tested in other applications.

Calculated MW 39 kDa. ([Note](#))

Properties

Form	Liquid
Buffer	PBS, 50% Glycerol
Preservative	0.09% Sodium azide
Storage	Store as concentrated solution. Centrifuge briefly prior to opening vial. For short-term storage (1-2 weeks), store at 4°C. For long-term storage, aliquot and store at -20°C or below. Avoid multiple freeze-thaw cycles.
Concentration	1 mg/ml (Please refer to the vial label for the specific concentration.)
Immunogen	Bovine Rhodopsin
Purification	Protein G purified
Conjugation	Unconjugated



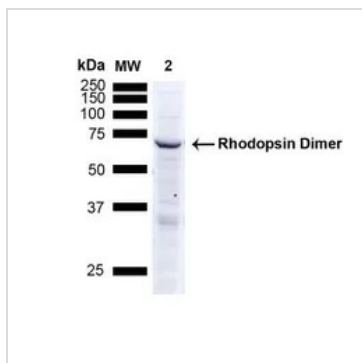
For full product information, images and publications, please visit our [website](#).

For laboratory research use only. Not for any clinical, therapeutic, or diagnostic use in humans or animals. Not for animal or human consumption.

Note

Purchasers shall not, and agree not to enable third parties to, analyze, copy, reverse engineer or otherwise attempt to determine the structure or sequence of the product.

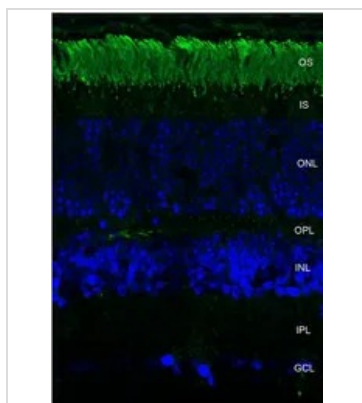
DATA IMAGES

**GTX02563 WB Image**

WB analysis of A549 cell lysate using GTX02563 Rhodopsin antibody [4D2].

Loading : 15 μ g

Dilution : 1:1000

**GTX02563 IHC Image**

IHC analysis of mouse retina tissue using GTX02563 Rhodopsin antibody [4D2]. Staining of photoreceptor outer segment (OS).

Green : Primary antibody

Blue : DAPI

Dilution : 1:1000



For full product information, images and publications, please visit our [website](#).