

Goat Anti-Mouse IgG1 antibody, pre-adsorbed (APC)

Cat. No. GTX02566

Host	Goat
Clonality	Polyclonal
Isotype	IgG
Applications	WB, ICC/IF, IHC-P, IHC-Fr, IHC-Wm, FCM, ELISA, EM, Multiplexing
Reactivity	Mouse

Package
250 µg

Applications

Application Note

*Optimal dilutions/concentrations should be determined by the researcher.

Suggested dilution	Recommended dilution
WB	Assay dependent
ICC/IF	Assay dependent
IHC-P	Assay dependent
IHC-Fr	Assay dependent
IHC-Wm	Assay dependent
FCM	Assay dependent
ELISA	Assay dependent
EM	Assay dependent
Multiplexing	Assay dependent

Not tested in other applications.

Product Note

It reacts with the heavy chain of mouse IgG1.
Pre-adsorbed with Mouse IgG2a, IgG2b, IgG3, IgM, and IgA; human immunoglobulins and pooled sera. May react with immunoglobulins from other species.

Properties

Form	Liquid
Buffer	PBS, stabilizer
Preservative	0.1% Sodium azide
Storage	Store as concentrated solution. Centrifuge briefly prior to opening vial. Store at 4°C. DO NOT FREEZE. Protect from light.
Concentration	0.5 mg/ml (Please refer to the vial label for the specific concentration.)
Immunogen	Pooled antisera from goats hyperimmunized with mouse IgG1



For full product information, images and publications, please visit our [website](#).

Date 2025 / 09 / 20 Page 1 of 2

Purification Purified by antigen-affinity chromatography

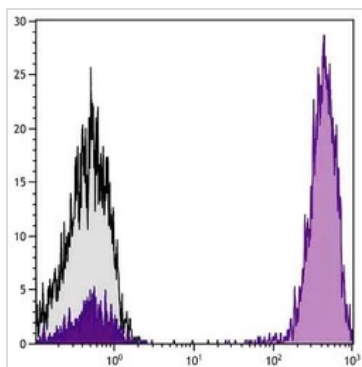
Conjugation Allophycocyanin (APC) [Wavelength](#)

Note

For laboratory research use only. Not for any clinical, therapeutic, or diagnostic use in humans or animals. Not for animal or human consumption.

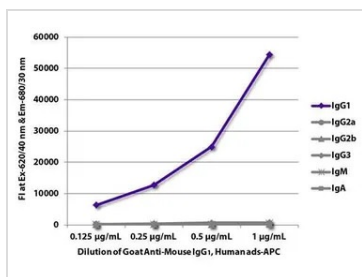
Purchasers shall not, and agree not to enable third parties to, analyze, copy, reverse engineer or otherwise attempt to determine the structure or sequence of the product.

DATA IMAGES



GTx02566 FCM Image

FACS analysis of human peripheral blood lymphocytes using Mouse Anti-Human CD3 antibody followed by GTx02566 Goat Anti-Mouse IgG1 antibody (APC).



GTx02566 ELISA Image

ELISA analysis of purified mouse IgG1, IgG2a, IgG2b, IgG3, IgM, and IgA using serially diluted GTx02566 Goat Anti-Mouse IgG1 antibody (APC).



For full product information, images and publications, please visit our [website](#).