

## Goat Anti-Mouse IgG1 (Heavy chain) antibody, pre-adsorbed (PE)

**Cat. No. GTX02567**

<b>Host</b>	Goat
<b>Clonality</b>	Polyclonal
<b>Isotype</b>	IgG
<b>Applications</b>	WB, ICC/IF, IHC-P, IHC-Fr, IHC-Wm, FCM, ELISA, EM, Multiplexing
<b>Reactivity</b>	Mouse

**Package**  
250 µg

## Applications

**Application Note**

\*Optimal dilutions/concentrations should be determined by the researcher.

Suggested dilution	Recommended dilution
WB	Assay dependent
ICC/IF	Assay dependent
IHC-P	Assay dependent
IHC-Fr	Assay dependent
IHC-Wm	Assay dependent
FCM	Assay dependent
ELISA	Assay dependent
EM	Assay dependent
Multiplexing	Assay dependent

Not tested in other applications.

**Product Note**

It reacts with the heavy chain of mouse IgG1.

Pre-adsorbed with Mouse IgG2a, IgG2b, IgG3, IgM, and IgA; human immunoglobulins and pooled sera. May react with immunoglobulins from other species.

## Properties

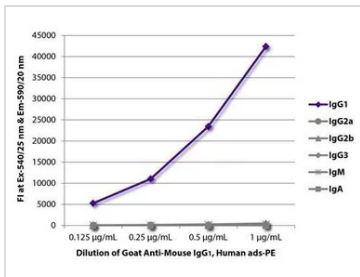
<b>Form</b>	Liquid
<b>Buffer</b>	PBS, stabilizer
<b>Preservative</b>	0.1% Sodium azide
<b>Storage</b>	Store as concentrated solution. Centrifuge briefly prior to opening vial. For short-term storage (1-2 weeks), store at 4°C. For long-term storage, aliquot and store at -20°C or below. Avoid multiple freeze-thaw cycles.
<b>Concentration</b>	0.5 mg/ml (Please refer to the vial label for the specific concentration.)



For full product information, images and publications, please visit our [website](#).

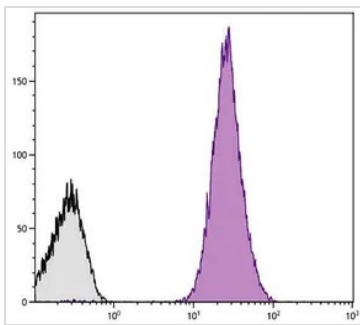
<b>Immunogen</b>	Pooled antisera from goats hyperimmunized with mouse IgG1
<b>Purification</b>	Purified by antigen-affinity chromatography
<b>Conjugation</b>	Phycoerythrin (PE) <a href="#">Wavelength</a>
<b>Note</b>	For laboratory research use only. Not for any clinical, therapeutic, or diagnostic use in humans or animals. Not for animal or human consumption.  Purchasers shall not, and agree not to enable third parties to, analyze, copy, reverse engineer or otherwise attempt to determine the structure or sequence of the product.

**DATA IMAGES**



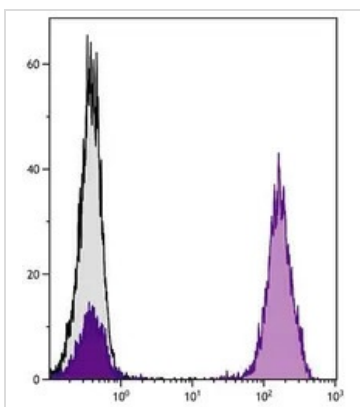
**GTX02567 ELISA Image**

ELISA analysis of purified mouse IgG1, IgG2a, IgG2b, IgG3, IgM, and IgA using serially diluted GTX02567 Goat Anti-Mouse IgG1 antibody (PE).



**GTX02567 FCM Image**

FACS analysis of human peripheral blood platelets using Mouse Anti-Human CD61 antibody followed by GTX02567 Goat Anti-Mouse IgG1 antibody (PE).



**GTX02567 FCM Image**

FACS analysis of human peripheral blood lymphocytes using Mouse Anti-Human CD3 antibody followed by GTX02567 Goat Anti-Mouse IgG1 antibody (PE).



For full product information, images and publications, please visit our [website](#).