

## Annexin A1 antibody [ANXA1/3869R]

Cat. No. GTX02590

Host	Rabbit
Clonality	Monoclonal
Isotype	IgG
Applications	WB, IHC-P, IP
Reactivity	Human, Mouse

References ( 1 )

Package

100 µg

## Applications

## Application Note

\*Optimal dilutions/concentrations should be determined by the researcher.

Suggested dilution	Recommended dilution
WB	1-2 µg/ml
IHC-P	1-2 µg/ml
IP	2-4 µg/mg protein

**Note : Staining of formalin-fixed tissues requires heating tissue sections in 10mM Tris buffer with 1mM EDTA (pH 9.0) for 45 min at 95°C followed by cooling at RT for 20 minutes.**

Not tested in other applications.

**Calculated MW** 39 kDa. ( [Note](#) )

## Properties

Form	Liquid
Buffer	PBS, 0.05% BSA
Preservative	0.05% Sodium azide
Storage	Store as concentrated solution. Centrifuge briefly prior to opening vial. Store at 4°C.
Concentration	200 µg/ml (Please refer to the vial label for the specific concentration.)
Immunogen	Recombinant full-length human Annexin A1 protein
Purification	Protein A/G purified
Conjugation	Unconjugated

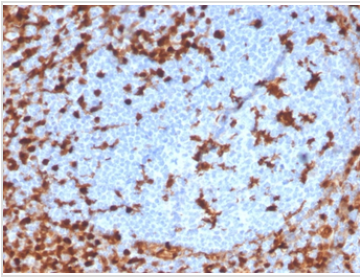
## Note

For laboratory research use only. Not for any clinical, therapeutic, or diagnostic use in humans or animals. Not for animal or human consumption.

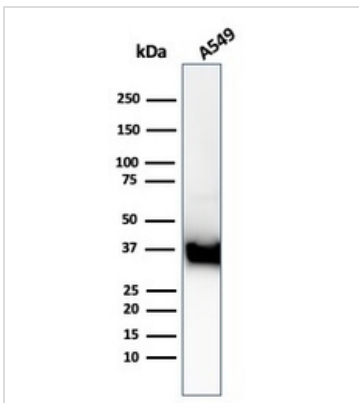
Purchasers shall not, and agree not to enable third parties to, analyze, copy, reverse engineer or otherwise attempt to determine the structure or sequence of the product.



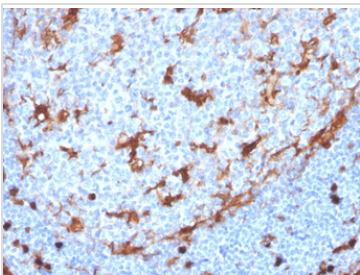
For full product information, images and publications, please visit our [website](#).

**DATA IMAGES**

**GTX02590 IHC-P Image**

IHC-P analysis of human tonsil tissue section using GTX02590 Annexin A1 antibody [ANXA1/3869R].


**GTX02590 WB Image**

WB analysis of A549 whole cell lysate using GTX02590 Annexin A1 antibody [ANXA1/3869R].


**GTX02590 IHC-P Image**

IHC-P analysis of human tonsil tissue section using GTX02590 Annexin A1 antibody [ANXA1/3869R].



For full product information, images and publications, please visit our [website](https://www.genetex.com).