

BCL10 antibody [BL10/2988R]

Cat. No. GTX02597

Host	Rabbit
Clonality	Monoclonal
Isotype	IgG
Applications	ICC/IF, IHC-P, FCM
Reactivity	Human

Package
100 µg

Applications

Application Note

*Optimal dilutions/concentrations should be determined by the researcher.

Suggested dilution	Recommended dilution
ICC/IF	1-2 µg/ml
IHC-P	1-2 µg/ml
FCM	1-2 µg/million cells

Note : Staining of formalin-fixed tissues requires heating tissue sections in 10mM Tris buffer with 1mM EDTA (pH 9.0) for 45 min at 95°C followed by cooling at RT for 20 minutes.

Not tested in other applications.

Properties

Form	Liquid
Buffer	PBS, 0.05% BSA
Preservative	0.05% Sodium azide
Storage	Store as concentrated solution. Centrifuge briefly prior to opening vial. Store at 4°C.
Concentration	200 µg/ml (Please refer to the vial label for the specific concentration.)
Immunogen	Recombinant human BCL10 protein fragment (around aa122-168)
Purification	Protein A/G purified
Conjugation	Unconjugated

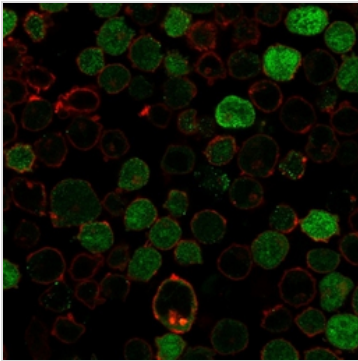
Note For laboratory research use only. Not for any clinical, therapeutic, or diagnostic use in humans or animals. Not for animal or human consumption.

Purchasers shall not, and agree not to enable third parties to, analyze, copy, reverse engineer or otherwise attempt to determine the structure or sequence of the product.



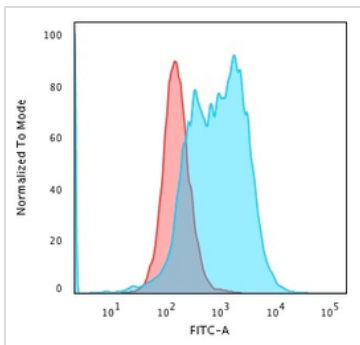
For full product information, images and publications, please visit our [website](#).

DATA IMAGES



GTX02597 ICC/IF Image

ICC/IF analysis of PFA-fixed K562 cells using GTX02597 BCL10 antibody [BL10/2988R].

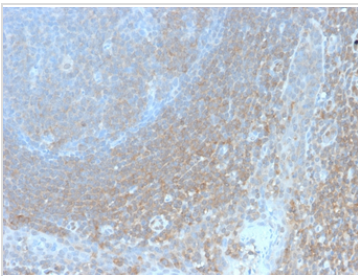


GTX02597 FCM Image

FACS analysis of PFA-fixed K562 cells using GTX02597 BCL10 antibody [BL10/2988R].

Blue : Primary antibody

Red : Isotype control



GTX02597 IHC-P Image

IHC-P analysis of human tonsil tissue section using GTX02597 BCL10 antibody [BL10/2988R].



For full product information, images and publications, please visit our [website](#).