

## Caldesmon antibody [CALD1/1424R]

Cat. No. GTX02598

Host	Rabbit
Clonality	Monoclonal
Isotype	IgG
Applications	IHC-P
Reactivity	Human, Rat

References ( 1 )

Package

100 µg

## Applications

## Application Note

\*Optimal dilutions/concentrations should be determined by the researcher.

Suggested dilution	Recommended dilution
IHC-P	1-2 µg/ml
<b>Note : Staining of formalin-fixed tissues requires heating tissue sections in 1mM EDTA (pH 7.5-8.5) for 45 min at 95°C followed by cooling at RT for 20 minutes.</b>	

Not tested in other applications.

## Product Note

This antibody recognizes only the 150kDa variant (h-caldesmon) in Western blots of human aortic media extracts and is unreactive with fibroblast extracts from cultivated human foreskin.

## Properties

Form	Liquid
Buffer	PBS, 0.05% BSA
Preservative	0.05% Sodium azide
Storage	Store as concentrated solution. Centrifuge briefly prior to opening vial. Store at 4°C.
Concentration	200 µg/ml (Please refer to the vial label for the specific concentration.)
Immunogen	Recombinant human full-length CALD1 protein
Purification	Protein A/G purified
Conjugation	Unconjugated

## Note

For laboratory research use only. Not for any clinical, therapeutic, or diagnostic use in humans or animals. Not for animal or human consumption.

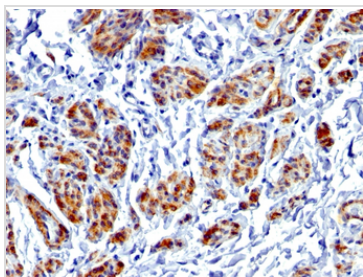
Purchasers shall not, and agree not to enable third parties to, analyze, copy, reverse engineer or otherwise attempt to determine the structure or sequence of the product.



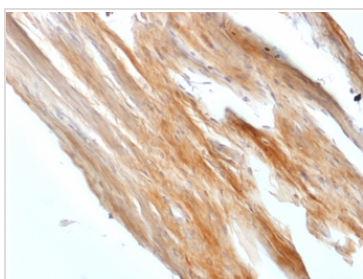
For full product information, images and publications, please visit our [website](#).

Date 2026 / 01 / 11 Page 1 of 2

## DATA IMAGES


**GTX02598 IHC-P Image**

IHC-P analysis of human uterus tissue section using GTX02598 Caldesmon antibody [CALD1/1424R].


**GTX02598 IHC-P Image**

IHC-P analysis of rat uterus tissue section using GTX02598 Caldesmon antibody [CALD1/1424R].



For full product information, images and publications, please visit our [website](#).