

CD38 antibody [CD38/4247R]

Cat. No. GTX02603

Host	Rabbit
Clonality	Monoclonal
Isotype	IgG
Applications	WB, IHC-P
Reactivity	Human

References (1)

Package

100 µg

Applications

Application Note

*Optimal dilutions/concentrations should be determined by the researcher.

Suggested dilution	Recommended dilution
WB	2-4 µg/ml
IHC-P	1-2 µg/ml

Note : Staining of formalin-fixed tissues requires heating tissue sections in 10mM Tris buffer with 1mM EDTA (pH 9.0) for 45 min at 95°C followed by cooling at RT for 20 minutes.

Not tested in other applications.

Calculated MW	34 kDa. (Note)
Observed MW (kDa)	45 kDa. The observed M.W. is based on the following publication. PMID: 24319640

Properties

Form	Liquid
Buffer	PBS, 0.05% BSA
Preservative	0.05% Sodium azide
Storage	Store as concentrated solution. Centrifuge briefly prior to opening vial. Store at 4°C.
Concentration	200 µg/ml (Please refer to the vial label for the specific concentration.)
Immunogen	Synthetic peptide corresponding to residues within aa200-300 of CD38
Purification	Protein A/G purified
Conjugation	Unconjugated

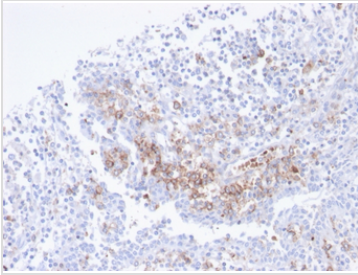


For full product information, images and publications, please visit our [website](#).

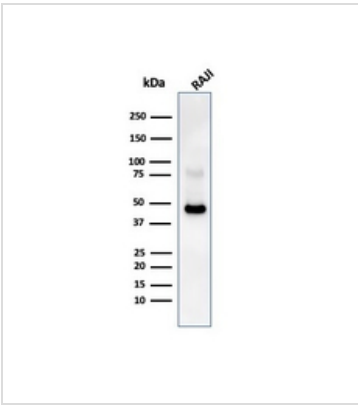
For laboratory research use only. Not for any clinical, therapeutic, or diagnostic use in humans or animals. Not for animal or human consumption.

Note

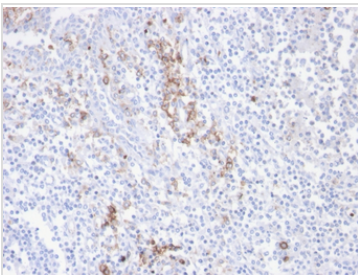
Purchasers shall not, and agree not to enable third parties to, analyze, copy, reverse engineer or otherwise attempt to determine the structure or sequence of the product.

DATA IMAGES

GTX02603 IHC-P Image

IHC-P analysis of human tonsil tissue section using GTX02603 CD38 antibody [CD38/4247R].


GTX02603 WB Image

WB analysis of Raji whole cell lysate using GTX02603 CD38 antibody [CD38/4247R].


GTX02603 IHC-P Image

IHC-P analysis of human tonsil tissue section using GTX02603 CD38 antibody [CD38/4247R].



For full product information, images and publications, please visit our [website](#).