

## CD44 antibody [HCAM/2875R]

Cat. No. GTX02606

Host	Rabbit
Clonality	Monoclonal
Isotype	IgG
Applications	WB, IHC-P
Reactivity	Human

Package

100 µg

## Applications

## Application Note

\*Optimal dilutions/concentrations should be determined by the researcher.

Suggested dilution	Recommended dilution
WB	1-2 µg/ml
IHC-P	0.25-0.5 µg/ml

**Note : Staining of formalin-fixed tissues requires heating tissue sections in 10mM Tris buffer with 1mM EDTA (pH 9.0) for 45 min at 95°C followed by cooling at RT for 20 minutes.**

Not tested in other applications.

Calculated MW	82 kDa. ( <a href="#">Note</a> )
Observed MW (kDa)	75-80 kDa. The observed M.W. is based on the following publication. PMID: 25888636
Product Note	Its epitope is resistant to digestion by trypsin and chymotrypsin. This antibody selectively interferes with lymphocyte binding to lymph node, mucosal and synovial endothelium.

## Properties

Form	Liquid
Buffer	PBS, 0.05% BSA
Preservative	0.05% Sodium azide
Storage	Store as concentrated solution. Centrifuge briefly prior to opening vial. Store at 4°C.
Concentration	200 µg/ml (Please refer to the vial label for the specific concentration.)
Immunogen	Stimulated human leukocytes
Purification	Protein A/G purified
Conjugation	Unconjugated



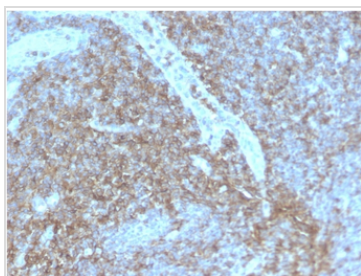
For full product information, images and publications, please visit our [website](#).

For laboratory research use only. Not for any clinical, therapeutic, or diagnostic use in humans or animals. Not for animal or human consumption.

## Note

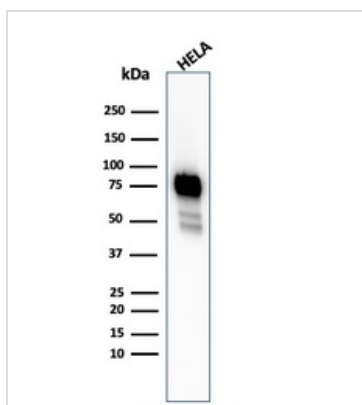
Purchasers shall not, and agree not to enable third parties to, analyze, copy, reverse engineer or otherwise attempt to determine the structure or sequence of the product.

## DATA IMAGES



### GTx02606 IHC-P Image

IHC-P analysis of human lymph node tissue section using GTx02606 CD44 antibody [HCAM/2875R].



### GTx02606 WB Image

WB analysis of HeLa whole cell lysate using GTx02606 CD44 antibody [HCAM/2875R].



For full product information, images and publications, please visit our [website](#).