

CD6 antibody [C6/2884R]

Cat. No. GTX02609

Host	Rabbit
Clonality	Monoclonal
Isotype	IgG
Applications	ICC/IF, IHC-P, FCM
Reactivity	Human

Package
100 µg

Applications

Application Note

*Optimal dilutions/concentrations should be determined by the researcher.

Suggested dilution	Recommended dilution
ICC/IF	1-2 µg/ml
IHC-P	1-2 µg/ml
FCM	1-2 µg/million cells

Note : Staining of formalin-fixed tissues requires heating tissue sections in 10mM Tris buffer with 1mM EDTA (pH 9.0) for 45 min at 95°C followed by cooling at RT for 20 minutes.

Not tested in other applications.

Properties

Form	Liquid
Buffer	PBS, 0.05% BSA
Preservative	0.05% Sodium azide
Storage	Store as concentrated solution. Centrifuge briefly prior to opening vial. Store at 4°C.
Concentration	200 µg/ml (Please refer to the vial label for the specific concentration.)
Immunogen	Human recombinant full-length CD6 protein
Purification	Protein A/G purified
Conjugation	Unconjugated

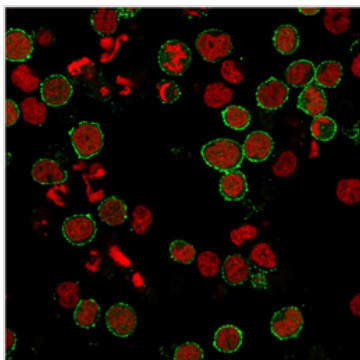
Note

For laboratory research use only. Not for any clinical, therapeutic, or diagnostic use in humans or animals. Not for animal or human consumption.

Purchasers shall not, and agree not to enable third parties to, analyze, copy, reverse engineer or otherwise attempt to determine the structure or sequence of the product.



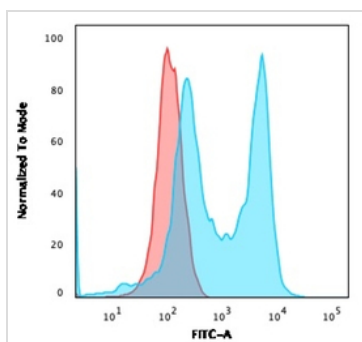
For full product information, images and publications, please visit our [website](#).

DATA IMAGES

GTX02609 ICC/IF Image

ICC/IF analysis of MOLT-4 cells using GTX02609 CD6 antibody [C6/2884R].

Green : Primary antibody

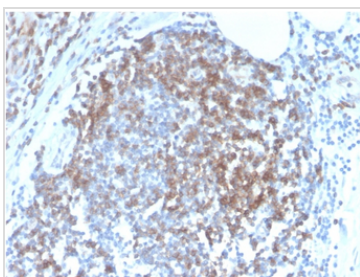
Red : nuclear counterstain


GTX02609 FCM Image

FACS analysis of MOLT-4 cells using GTX02609 CD6 antibody [C6/2884R].

Blue : Primary antibody

Red : Isotype control


GTX02609 IHC-P Image

IHC-P analysis of human tonsil tissue section using GTX02609 CD6 antibody [C6/2884R].



For full product information, images and publications, please visit our [website](https://www.genetex.com).