

CD63 antibody [LAMP3/2990R]

Cat. No. GTX02610

Host	Rabbit
Clonality	Monoclonal
Isotype	IgG
Applications	IHC-P, FCM
Reactivity	Human

Package
100 µg

Applications

Application Note

*Optimal dilutions/concentrations should be determined by the researcher.

Suggested dilution	Recommended dilution
IHC-P	1-2 µg/ml
FCM	1-2 µg/million cells

Note : Staining of formalin-fixed tissues requires heating tissue sections in 10mM Tris buffer with 1mM EDTA (pH 9.0) for 45 min at 95°C followed by cooling at RT for 20 minutes.

Not tested in other applications.

Product Note Its epitope is different from that of MAb LAMP3/529.

Properties

Form	Liquid
Buffer	PBS, 0.05% BSA
Preservative	0.05% Sodium azide
Storage	Store as concentrated solution. Centrifuge briefly prior to opening vial. Store at 4°C.
Concentration	200 µg/ml (Please refer to the vial label for the specific concentration.)
Immunogen	Recombinant human full-length CD63 protein
Purification	Protein A/G purified
Conjugation	Unconjugated

Note

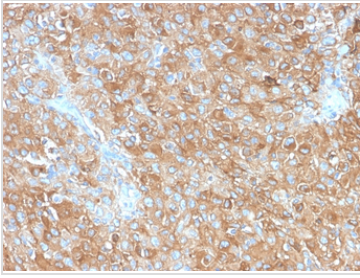
For laboratory research use only. Not for any clinical, therapeutic, or diagnostic use in humans or animals. Not for animal or human consumption.

Purchasers shall not, and agree not to enable third parties to, analyze, copy, reverse engineer or otherwise attempt to determine the structure or sequence of the product.

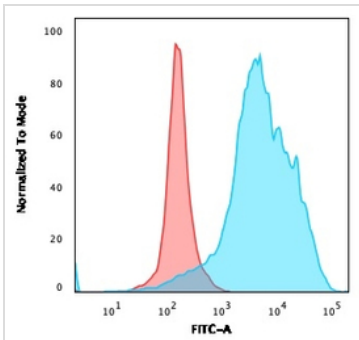


For full product information, images and publications, please visit our [website](#).

DATA IMAGES

**GTX02610 IHC-P Image**

IHC-P analysis of human prostate carcinoma section using GTX02610 CD63 antibody [LAMP3/2990R].

**GTX02610 FCM Image**

FACS analysis of PFA-fixed U87-MG cells using GTX02610 CD63 antibody [LAMP3/2990R].

Blue : Primary antibody

Red : Isotype control



For full product information, images and publications, please visit our [website](#).