

CD86 antibody [C86/2160R]

Cat. No. GTX02615

Host	Rabbit
Clonality	Monoclonal
Isotype	IgG
Application	WB, ICC/IF, IHC-P, FACS, ELISA
Reactivity	Human, Mouse, Rat

Package
100 µg

APPLICATION

Application Note

*Optimal dilutions/concentrations should be determined by the researcher.

Suggested dilution	Recommended dilution
WB	1-2 µg/ml
ICC/IF	1-2 µg/ml
IHC-P	1-2 µg/ml
FACS	1-2 µg/million cells
ELISA	2-4 µg/ml (for coating)

Note : Staining of formalin-fixed tissues requires heating tissue sections in 10mM Tris buffer with 1mM EDTA (pH 9.0) for 45 min at 95°C followed by cooling at RT for 20 minutes.

For ELISA coating, recommend using BSA-free format (please contact us for PBS only format).

Not tested in other applications.

Calculated MW	38 kDa. (Note)
Observed MW	65-70 kDa. The observed M.W. is based on the following publication. PMID: 28326017

PROPERTIES

Form	Liquid
Buffer	PBS, 0.05% BSA
Preservative	0.05% Sodium azide
Storage	Store as concentrated solution. Centrifuge briefly prior to opening vial. Store at 4°C.
Concentration	200 µg/ml (Please refer to the vial label for the specific concentration.)
Immunogen	Recombinant human full-length CD86 protein
Purification	Protein A/G purified



For full product information, images and publications, please visit our [website](#).

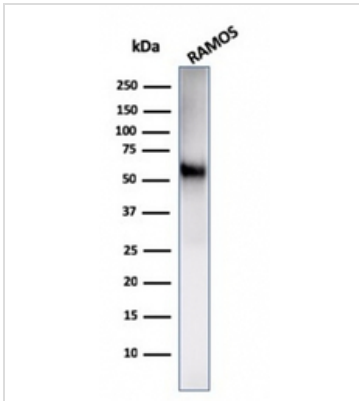
Conjugation

Unconjugated

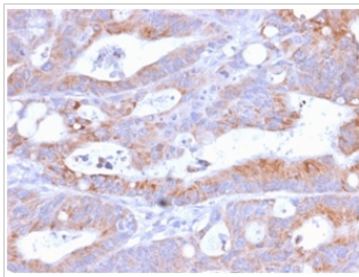
Note

For laboratory research use only. Not for any clinical, therapeutic, or diagnostic use in humans or animals. Not for animal or human consumption.

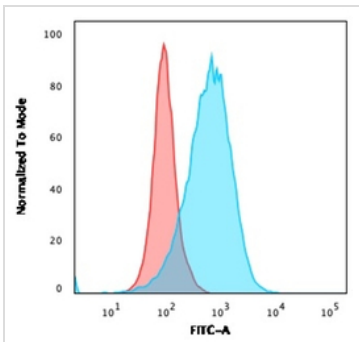
Purchasers shall not, and agree not to enable third parties to, analyze, copy, reverse engineer or otherwise attempt to determine the structure or sequence of the product.

DATA IMAGES

GTx02615 WB Image

WB analysis of Ramos whole cell lysate using GTx02615 CD86 antibody [C86/2160R].


GTx02615 IHC-P Image

IHC-P analysis of human colon tissue section using GTx02615 CD86 antibody [C86/2160R].


GTx02615 FACS Image

FACS analysis of Ramos cells using GTx02615 CD86 antibody [C86/2160R].

Blue : Primary antibody

Red : Isotype control



For full product information, images and publications, please visit our [website](#).