

Cytochrome C antibody [CYCS/3128R]

Cat. No. GTX02626

Host	Rabbit
Clonality	Monoclonal
Isotype	IgG
Applications	WB, ICC/IF, IHC-P, FCM
Reactivity	Human, Mouse, Rat, Drosophila, Dog, Frog, Horse, pigeon

Package
100 µg

Applications

Application Note

*Optimal dilutions/concentrations should be determined by the researcher.

Suggested dilution	Recommended dilution
WB	1-2 µg/ml
ICC/IF	1-2 µg/ml
IHC-P	0.25-0.5 µg/ml
FCM	1-2 µg/million cells

Note : Staining of formalin-fixed tissues requires heating tissue sections in 10mM Tris buffer with 1mM EDTA (pH 9.0) for 45 min at 95°C followed by cooling at RT for 20 minutes.

Not tested in other applications.

Calculated MW 12 kDa. ([Note](#))

Product Note This antibody recognizes both apocytochrome (i.e. cytochrome in the cytosol without heme attached) and holocytochrome (i.e. cytochrome in the mitochondria with heme attached).

Properties

Form	Liquid
Buffer	PBS, 0.05% BSA
Preservative	0.05% Sodium azide
Storage	Store as concentrated solution. Centrifuge briefly prior to opening vial. Store at 4°C.
Concentration	200 µg/ml (Please refer to the vial label for the specific concentration.)
Immunogen	Recombinant full-length human CYCS protein. An epitope within amino acids 93-104 of pigeon Cytochrome C.
Purification	Protein A/G purified
Conjugation	Unconjugated



For full product information, images and publications, please visit our [website](#).

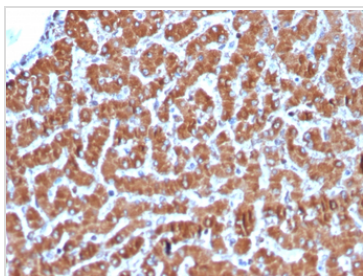
Date 2025 / 07 / 16 Page 1 of 2

For laboratory research use only. Not for any clinical, therapeutic, or diagnostic use in humans or animals. Not for animal or human consumption.

Note

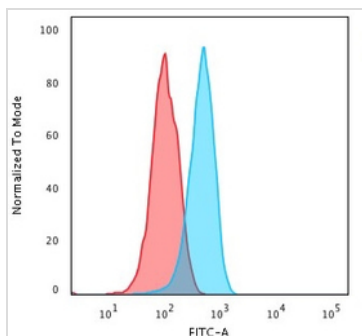
Purchasers shall not, and agree not to enable third parties to, analyze, copy, reverse engineer or otherwise attempt to determine the structure or sequence of the product.

DATA IMAGES



GTX02626 IHC-P Image

IHC-P analysis of human liver tissue section using GTX02626 Cytochrome C antibody [CYCS/3128R].

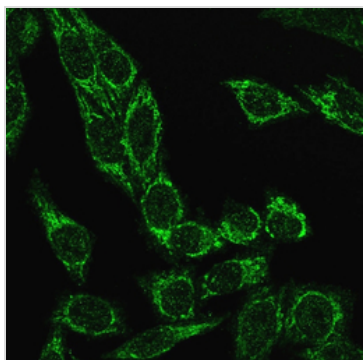


GTX02626 FCM Image

FACS analysis of PFA fixed HeLa cells using GTX02626 Cytochrome C antibody [CYCS/3128R].

Blue : Primary antibody

Red : Isotype control



GTX02626 ICC/IF Image

ICC/IF analysis of PFA fixed HeLa cells using GTX02626 Cytochrome C antibody [CYCS/3128R].

Green : Primary antibody



For full product information, images and publications, please visit our [website](#).