

# EPX antibody [EPX/3908R]

**Cat. No. GTX02634**

<b>Host</b>	Rabbit
<b>Clonality</b>	Monoclonal
<b>Isotype</b>	IgG
<b>Applications</b>	ICC/IF, IHC-P, FCM
<b>Reactivity</b>	Human

**Package**  
100 µg

## Applications

### Application Note

\*Optimal dilutions/concentrations should be determined by the researcher.

Suggested dilution	Recommended dilution
ICC/IF	0.5-1 µg/ml
IHC-P	1-2 µg/ml
FCM	0.5-1 µg/million cells

**Note : Staining of formalin-fixed tissues requires heating tissue sections in 10mM Tris buffer with 1mM EDTA (pH 9.0) for 45 min at 95°C followed by cooling at RT for 20 minutes.**

Not tested in other applications.

### Product Note

This antibody stains eosinophils only and does not stain other peripheral blood cells, including platelets, neutrophils, monocytes, lymphocytes or red blood cells.

## Properties

<b>Form</b>	Liquid
<b>Buffer</b>	PBS, 0.05% BSA
<b>Preservative</b>	0.05% Sodium azide
<b>Storage</b>	Store as concentrated solution. Centrifuge briefly prior to opening vial. Store at 4°C.
<b>Concentration</b>	200 µg/ml (Please refer to the vial label for the specific concentration.)
<b>Immunogen</b>	Human eosinophils from a patient with hypereosinophilic syndrome
<b>Purification</b>	Protein A/G purified
<b>Conjugation</b>	Unconjugated

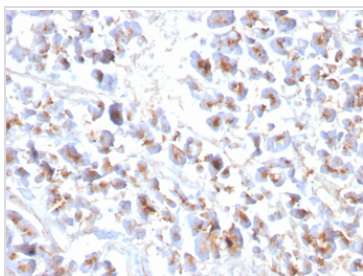


For full product information, images and publications, please visit our [website](#).

For laboratory research use only. Not for any clinical, therapeutic, or diagnostic use in humans or animals. Not for animal or human consumption.

**Note**

Purchasers shall not, and agree not to enable third parties to, analyze, copy, reverse engineer or otherwise attempt to determine the structure or sequence of the product.

**DATA IMAGES**

**GTx02634 IHC-P Image**

IHC-P analysis of human pancreas tissue section using GTx02634 EPX antibody [EPX/3908R].



For full product information, images and publications, please visit our [website](#).