

## FOXA1 antibody [FOXA1/2230R]

Cat. No. GTX02640

<b>Host</b>	Rabbit
<b>Clonality</b>	Monoclonal
<b>Isotype</b>	IgG
<b>Applications</b>	WB, ICC/IF, IHC-P, FCM
<b>Reactivity</b>	Human, Rat

Package  
100 µg

## Applications

## Application Note

\*Optimal dilutions/concentrations should be determined by the researcher.

Suggested dilution	Recommended dilution
WB	1-2 µg/ml
ICC/IF	1-2 µg/ml
IHC-P	1-2 µg/ml
FCM	0.5-1 µg/million cells

**Note : Staining of formalin-fixed tissues requires heating tissue sections in 10mM Tris buffer with 1mM EDTA (pH 9.0) for 45 min at 95°C followed by cooling at RT for 20 minutes. Permeabilization step is needed.**

Not tested in other applications.

**Calculated MW** 49 kDa. ([Note](#))

## Properties

<b>Form</b>	Liquid
<b>Buffer</b>	PBS, 0.05% BSA
<b>Preservative</b>	0.05% Sodium azide
<b>Storage</b>	Store as concentrated solution. Centrifuge briefly prior to opening vial. Store at 4°C.
<b>Concentration</b>	200 µg/ml (Please refer to the vial label for the specific concentration.)
<b>Immunogen</b>	Recombinant human FOXA1 protein fragment (around aa372-472)
<b>Purification</b>	Protein A/G purified
<b>Conjugation</b>	Unconjugated



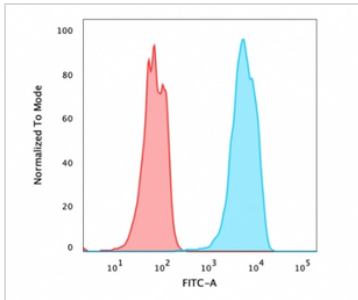
For full product information, images and publications, please visit our [website](#).

For laboratory research use only. Not for any clinical, therapeutic, or diagnostic use in humans or animals. Not for animal or human consumption.

**Note**

Purchasers shall not, and agree not to enable third parties to, analyze, copy, reverse engineer or otherwise attempt to determine the structure or sequence of the product.

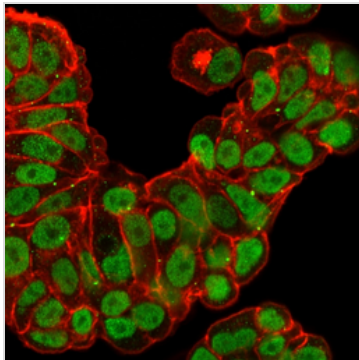
## DATA IMAGES

**GTX02640 FCM Image**

FACS analysis of PFA fixed MCF-7 cells using GTX02640 FOXA1 antibody [FOXA1/2230R].

Blue : Primary antibody

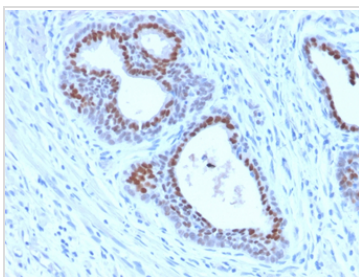
Red : Isotype control

**GTX02640 ICC/IF Image**

ICC/IF analysis of PFA-fixed MCF-7 cells using GTX02640 FOXA1 antibody [FOXA1/2230R].

Green : Primary antibody

Red : Phalloiden (membrane)

**GTX02640 IHC-P Image**

IHC-P analysis of human tonsil tissue section using GTX02640 FOXA1 antibody [FOXA1/2230R].



For full product information, images and publications, please visit our [website](#).