

## GFAP antibody [ASTRO/1974R]

**Cat. No. GTX02644**

|                     |   |
|---------------------|---|
| <b>Host</b>         | Rabbit  |
| <b>Clonality</b>    | Monoclonal                                      |
| <b>Isotype</b>      | IgG   |
| <b>Applications</b> | IHC-P, FCM                                      |
| <b>Reactivity</b>   | Human, Mouse, Rat, Rabbit, Bovine, Chicken, Pig |

Package  
100 µg

## Applications

**Application Note**

\*Optimal dilutions/concentrations should be determined by the researcher.

| Suggested dilution | Recommended dilution |
|--------------------|----------------------|
| IHC-P              | 1-2 µg/ml            |
| FCM                | 1-2 µg/million cells |

**Note : Staining of formalin-fixed tissues requires heating tissue sections in 10mM Tris buffer with 1mM EDTA (pH 9.0) for 45 min at 95°C followed by cooling at RT for 20 minutes.**

Not tested in other applications.

**Product Note** It shows no cross-reaction with other intermediate filament proteins.

## Properties

|                      |   |
|----------------------|---|
| <b>Form</b>          | Liquid  |
| <b>Buffer</b>        | PBS, 0.05% BSA  |
| <b>Preservative</b>  | 0.05% Sodium azide  |
| <b>Storage</b>       | Store as concentrated solution. Centrifuge briefly prior to opening vial. Store at 4°C. |
| <b>Concentration</b> | 200 µg/ml (Please refer to the vial label for the specific concentration.)              |
| <b>Immunogen</b>     | Recombinant human full-length GFAP protein  |
| <b>Purification</b>  | Protein A/G purified  |
| <b>Conjugation</b>   | Unconjugated  |

**Note**

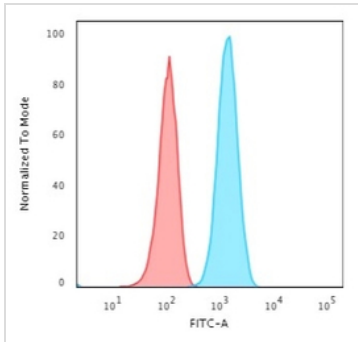
For laboratory research use only. Not for any clinical, therapeutic, or diagnostic use in humans or animals. Not for animal or human consumption.

Purchasers shall not, and agree not to enable third parties to, analyze, copy, reverse engineer or otherwise attempt to determine the structure or sequence of the product.



For full product information, images and publications, please visit our [website](#).

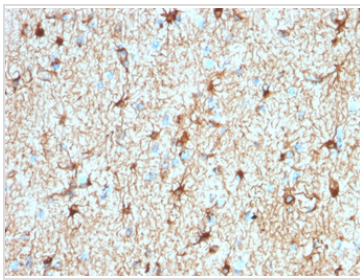
## DATA IMAGES

**GTX02644 FCM Image**

FACS analysis of T98G cells using GTX02644 GFAP antibody [ASTRO/1974R].

Blue : Primary antibody

Red : Isotype control

**GTX02644 IHC-P Image**

IHC-P analysis of human cerebellum tissue section using GTX02644 GFAP antibody [ASTRO/1974R].



For full product information, images and publications, please visit our [website](#).