

HSP60 antibody [HSPD1/2206R]

Cat. No. GTX02649

| | |
|---------------------|--|
| Host | Rabbit |
| Clonality | Monoclonal |
| Isotype | IgG |
| Applications | WB, IHC-P |
| Reactivity | Human, Mouse, Rat, Rabbit, Sheep, Bovine, Dog, Hamster, Chicken, Pig, Monkey |

Package
100 µg

Applications

Application Note

*Optimal dilutions/concentrations should be determined by the researcher.

| Suggested dilution | Recommended dilution |
|--------------------|----------------------|
| WB | 0.25-0.5 µg/ml |
| IHC-P | 1-2 µg/ml |

Note : Staining of formalin-fixed tissues requires heating tissue sections in 10mM Tris buffer with 1mM EDTA (pH 9.0) for 45 min at 95°C followed by cooling at RT for 20 minutes.

Not tested in other applications.

Calculated MW 61 kDa. ([Note](#))

Properties

| | |
|----------------------|---|
| Form | Liquid |
| Buffer | PBS, 0.05% BSA |
| Preservative | 0.05% Sodium azide |
| Storage | Store as concentrated solution. Centrifuge briefly prior to opening vial. Store at 4°C. |
| Concentration | 200 µg/ml (Please refer to the vial label for the specific concentration.) |
| Immunogen | Recombinant human full-length HSP60 protein. An epitope is localized between aa 383-447 of human HSP60. |
| Purification | Protein A/G purified |
| Conjugation | Unconjugated |

Note

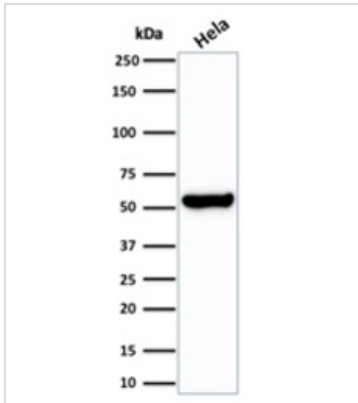
For laboratory research use only. Not for any clinical, therapeutic, or diagnostic use in humans or animals. Not for animal or human consumption.

Purchasers shall not, and agree not to enable third parties to, analyze, copy, reverse engineer or otherwise attempt to determine the structure or sequence of the product.

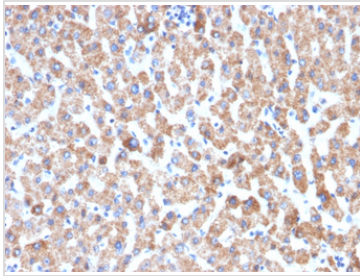


For full product information, images and publications, please visit our [website](#).

DATA IMAGES

**GTX02649 WB Image**

WB analysis of HeLa whole cell lysate using GTX02649 HSP60 antibody [HSPD1/2206R].

**GTX02649 IHC-P Image**

IHC-P analysis of human liver tissue section using GTX02649 HSP60 antibody [HSPD1/2206R].



For full product information, images and publications, please visit our [website](#).