

Cytokeratin 20 antibody [KRT20/3129R]

Cat. No. GTX02660

Host	Rabbit
Clonality	Monoclonal
Isotype	IgG
Applications	WB, IHC-P
Reactivity	Human

Package
100 µg

Applications

Application Note

*Optimal dilutions/concentrations should be determined by the researcher.

Suggested dilution	Recommended dilution
WB	1-2 µg/ml
IHC-P	1-2 µg/ml

Note : Staining of formalin-fixed tissues requires heating tissue sections in 10mM Tris buffer with 1mM EDTA (pH 9.0) for 45 min at 95°C followed by cooling at RT for 20 minutes.

Not tested in other applications.

Calculated MW 48 kDa. ([Note](#))

Properties

Form	Liquid
Buffer	PBS, 0.05% BSA
Preservative	0.05% Sodium azide
Storage	Store as concentrated solution. Centrifuge briefly prior to opening vial. Store at 4°C.
Concentration	200 µg/ml (Please refer to the vial label for the specific concentration.)
Immunogen	Recombinant fragment of human KRT20 protein (around aa 196-323)
Purification	Protein A/G purified
Conjugation	Unconjugated

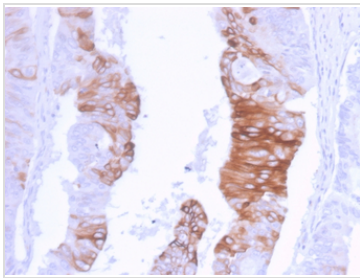
Note

For laboratory research use only. Not for any clinical, therapeutic, or diagnostic use in humans or animals. Not for animal or human consumption.

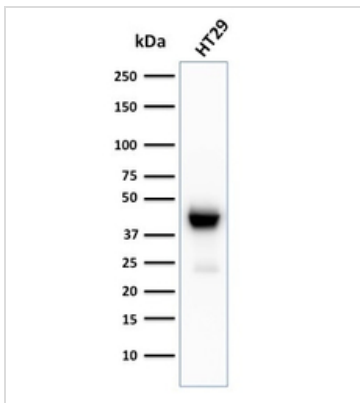
Purchasers shall not, and agree not to enable third parties to, analyze, copy, reverse engineer or otherwise attempt to determine the structure or sequence of the product.



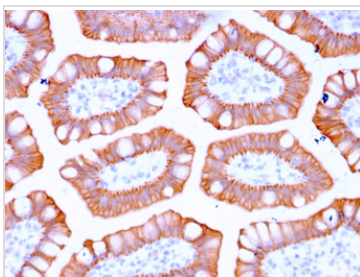
For full product information, images and publications, please visit our [website](#).

DATA IMAGES

GTx02660 IHC-P Image

IHC-P analysis of human colon carcinoma section using GTx02660 Cytokeratin 20 antibody [KRT20/3129R].


GTx02660 WB Image

WB analysis of HT29 whole cell lysate using GTx02660 Cytokeratin 20 antibody [KRT20/3129R].


GTx02660 IHC-P Image

IHC-P analysis of human colon tissue section using GTx02660 Cytokeratin 20 antibody [KRT20/3129R].



For full product information, images and publications, please visit our [website](https://www.genetex.com).