

# Cytokeratin 2 antibody [KRTH/4392R]

**Cat. No. GTX02665**

<b>Host</b>	Rabbit
<b>Clonality</b>	Monoclonal
<b>Isotype</b>	IgG
<b>Applications</b>	IHC-P
<b>Reactivity</b>	Human

**Package**  
100 µg

## Applications

### Application Note

\*Optimal dilutions/concentrations should be determined by the researcher.

Suggested dilution	Recommended dilution
IHC-P	1-2 µg/ml
<b>Note : Staining of formalin-fixed tissues requires heating tissue sections in 10mM Tris buffer with 1mM EDTA (pH 9.0) for 45 min at 95°C followed by cooling at RT for 20 minutes.</b>	

Not tested in other applications.

**Product Note** This antibody can detect high molecular weight CK1, CK2, CK3, CK4, CK5, CK6, CK7 and CK8.

## Properties

<b>Form</b>	Liquid
<b>Buffer</b>	PBS, 0.05% BSA
<b>Preservative</b>	0.05% Sodium azide
<b>Storage</b>	Store as concentrated solution. Centrifuge briefly prior to opening vial. Store at 4°C.
<b>Concentration</b>	200 µg/ml (Please refer to the vial label for the specific concentration.)
<b>Immunogen</b>	Synthetic peptide corresponding to human Type II Cytokeratins residues within aa300-400
<b>Purification</b>	Protein A/G purified
<b>Conjugation</b>	Unconjugated

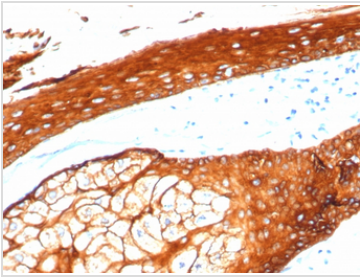
### Note

For laboratory research use only. Not for any clinical, therapeutic, or diagnostic use in humans or animals. Not for animal or human consumption.

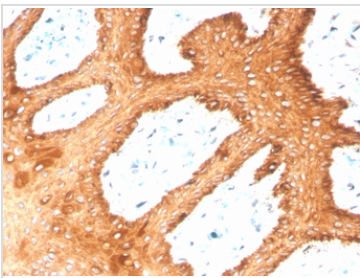
Purchasers shall not, and agree not to enable third parties to, analyze, copy, reverse engineer or otherwise attempt to determine the structure or sequence of the product.



For full product information, images and publications, please visit our [website](#).

**DATA IMAGES**

**GTX02665 IHC-P Image**

IHC-P analysis of human skin tissue section using GTX02665 Cytokeratin 2 antibody [KRTH/4392R].


**GTX02665 IHC-P Image**

IHC-P analysis of human skin tissue section using GTX02665 Cytokeratin 2 antibody [KRTH/4392R].



For full product information, images and publications, please visit our [website](#).