

## Cytokeratin 8 antibody [KRT8/2174R]

**Cat. No. GTX02669**

|                     |                                   |
|---------------------|-----------------------------------|
| <b>Host</b>         | Rabbit                            |
| <b>Clonality</b>    | Monoclonal                        |
| <b>Isotype</b>      | IgG                               |
| <b>Applications</b> | WB, IHC-P                         |
| <b>Reactivity</b>   | Human, Rabbit, Sheep, Bovine, Pig |

Package  
100 µg

## Applications

**Application Note**

\*Optimal dilutions/concentrations should be determined by the researcher.

| Suggested dilution | Recommended dilution |
|--------------------|----------------------|
| WB                 | 1-2 µg/ml            |
| IHC-P              | 1-2 µg/ml            |

**Note : Staining of formalin-fixed tissues requires heating tissue sections in 10mM Tris buffer with 1mM EDTA (pH 9.0) for 45 min at 95°C followed by cooling at RT for 20 minutes.**

Not tested in other applications.

**Calculated MW** 54 kDa. ([Note](#))

**Product Note** This antibody does not react with skeletal muscle or nerve cells.

## Properties

|                      |   |
|----------------------|---|
| <b>Form</b>          | Liquid  |
| <b>Buffer</b>        | PBS, 0.05% BSA  |
| <b>Preservative</b>  | 0.05% Sodium azide  |
| <b>Storage</b>       | Store as concentrated solution. Centrifuge briefly prior to opening vial. Store at 4°C. |
| <b>Concentration</b> | 200 µg/ml (Please refer to the vial label for the specific concentration.)              |
| <b>Immunogen</b>     | Recombinant full-length human KRT8 protein  |
| <b>Purification</b>  | Protein A/G purified  |
| <b>Conjugation</b>   | Unconjugated  |



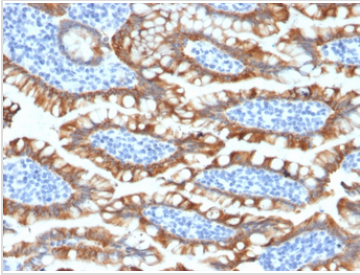
For full product information, images and publications, please visit our [website](#).

For laboratory research use only. Not for any clinical, therapeutic, or diagnostic use in humans or animals. Not for animal or human consumption.

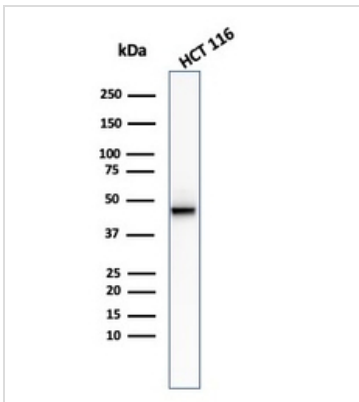
**Note**

Purchasers shall not, and agree not to enable third parties to, analyze, copy, reverse engineer or otherwise attempt to determine the structure or sequence of the product.

## DATA IMAGES

**GTX02669 IHC-P Image**

IHC-P analysis of human small intestine tissue section using GTX02669 Cytokeratin 8 antibody [KRT8/2174R].

**GTX02669 WB Image**

WB analysis of HCT116 whole cell lysate using GTX02669 Cytokeratin 8 antibody [KRT8/2174R].



For full product information, images and publications, please visit our [website](#).