

## Galectin 1 antibody [GAL1/2499R]

Cat. No. GTX02670

Host	Rabbit
Clonality	Monoclonal
Isotype	IgG
Applications	WB, IHC-P, ELISA, Protein Array
Reactivity	Human

Package  
100 µg

## Applications

## Application Note

\*Optimal dilutions/concentrations should be determined by the researcher.

Suggested dilution	Recommended dilution
WB	1-2 µg/ml
IHC-P	1-2 µg/ml
ELISA	2-4 µg/ml (for coating)
Protein Array	Assay dependent

**Note : Staining of formalin-fixed tissues requires heating tissue sections in 10mM Tris buffer with 1mM EDTA (pH 9.0) for 45 min at 95°C followed by cooling at RT for 20 minutes.**

**For ELISA coating, recommend using BSA-free format (please contact us for PBS only format).**

Not tested in other applications.

Calculated MW 15 kDa. ( [Note](#) )

## Properties

Form	Liquid
Buffer	PBS, 0.05% BSA
Preservative	0.05% Sodium azide
Storage	Store as concentrated solution. Centrifuge briefly prior to opening vial. Store at 4°C.
Concentration	200 µg/ml (Please refer to the vial label for the specific concentration.)
Immunogen	Recombinant fragment (around aa 12-108) of human Galectin-1 protein
Purification	Protein A/G purified
Conjugation	Unconjugated

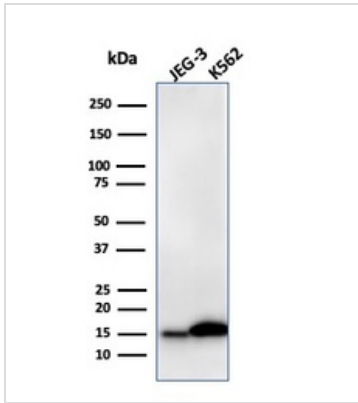


For full product information, images and publications, please visit our [website](#).

For laboratory research use only. Not for any clinical, therapeutic, or diagnostic use in humans or animals. Not for animal or human consumption.

**Note**

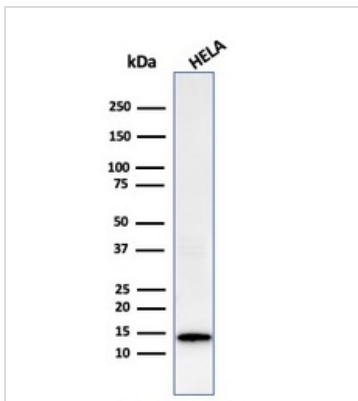
Purchasers shall not, and agree not to enable third parties to, analyze, copy, reverse engineer or otherwise attempt to determine the structure or sequence of the product.

**DATA IMAGES**

**GTx02670 WB Image**

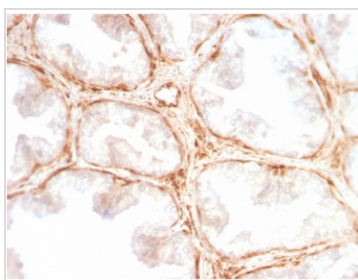
WB analysis of various samples using GTx02670 Galectin 1 antibody [GAL1/2499R].

Lane 1 : JEG-3 whole cell lysate

Lane 2 : K562 whole cell lysate


**GTx02670 WB Image**

WB analysis of HeLa whole cell lysate using GTx02670 Galectin 1 antibody [GAL1/2499R].


**GTx02670 IHC-P Image**

IHC-P analysis of human prostate carcinoma section using GTx02670 Galectin 1 antibody [GAL1/2499R].



For full product information, images and publications, please visit our [website](https://www.genetex.com).